

Task Focus: “Land Use and Human Impact: Getting the Picture”
Pre & Post Assessment

Concept: Change & Constancy

Strands that may be emphasized in this scientific exploration:

4th Grade: Scientific Investigation, Life Processes, Living Systems, Earth Resources

SOLs: 4.1a, h; 4.4; 4.5b, d, f; 4.9a

Essential Standard S2: (Relationships between observed effects and inferred causes to determine causal relationships)

Big Idea: Change can have positive and negative effects on the environment (note that the change may be a natural event or a man-made action).

The Task:

See the following worksheet.

Names: _____ Date: _____

Performance Task – Land Use and Human Impact

1. Compare the two photographs. Make a list of what you see for both the old photo and the new photo.

Old	New

2. Use the key below to code your lists. Put a "M" next to the things you noticed that are manmade. Put a "N" next to the things you noticed that are natural.

M	Manmade
N	Natural

3. What changes do you notice between the old photo and the new photo? What do you think changed the land?

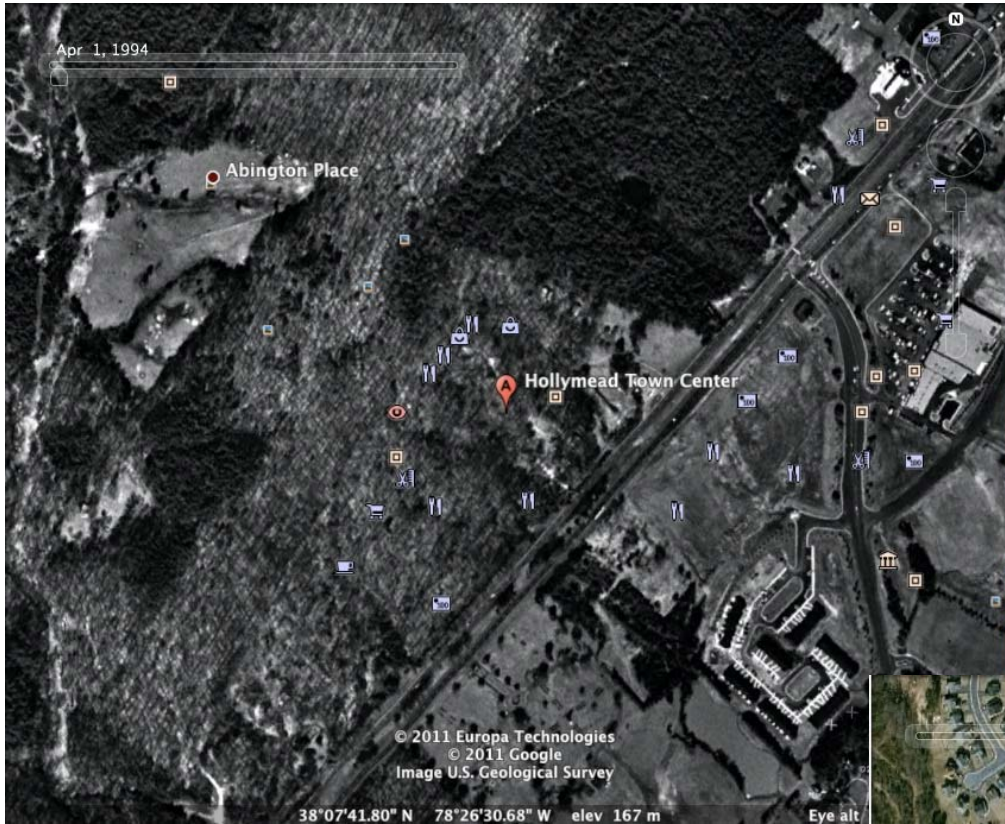
Change	What do you think changed the land?

4. Use the key below to code your list. Put a + next to the changes that you think are positive. Put a - next to the changes you think are negative.

+	Positive change
-	Negative change

5. Pick three changes and explain why you coded them positive or negative.

6. Predict what the land might look like in 10 years. Explain why you made that prediction.



1994

2011



“Land Use and Human Impact: Getting the Picture” Rubric

My Name: _____

	3	2	1	0
Observation	I listed 5 or more natural and/or human changes.	I listed 3 or 4 natural and/or human changes.	I listed 1 or 2 natural and/or human changes.	Not done.
Explanation	For each change, I wrote a detailed explanation of my thinking.	For over half of the changes, I explained my thinking.	I explained less than half of my changes.	Not done.
Positive/Negative Impact	I explained 3 or more positive and/or negative changes.	I explained 2 changes.	I explained 1.	Not done.
Predictions	I made a prediction(s) with a reason(s) that makes sense.	I made a prediction(s), but my reason has room for improvement.	I made a prediction with no reason.	Not done.

Your Point Total: _____

Grade Scale: A = 12 – 10 points, B = 9 – 7, C = 6 – 4, U = less than 4