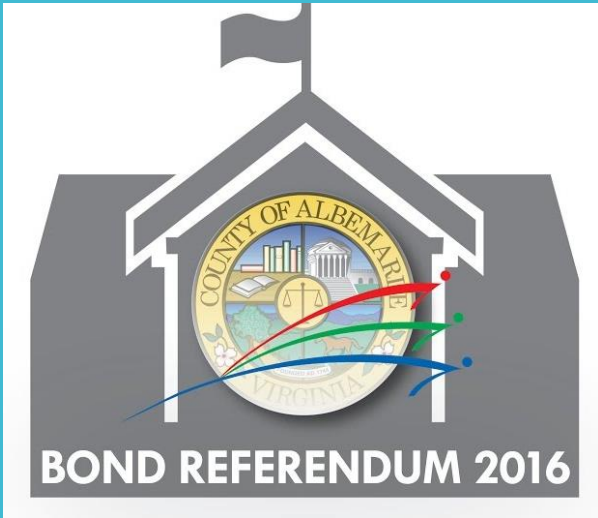


# BOND REFERENDUM 2016 PROJECTS (2<sup>nd</sup> Year)

Security Additions and Repurposing of Office Spaces, Science Lab, Classroom and Media Center Modernizations



## COMPLETE

- **Modernization Work**
  - Albemarle
  - Western Albemarle
  - Jouett
  - Walton
- **Furniture Upgrades**
  - 4 Elementary schools (10 classrooms)



## UNDER CONSTRUCTION

- **Security Projects**
  - Baker-Butler
  - Scottsville
- **Addition & Modernization Work**
  - Woodbrook



## IN DESIGN

- **Addition & Modernization Work**
  - Western Albemarle
- **Modernization Work**
  - Albemarle
  - Burley
  - Sutherland
  - Henley
- **Security Projects**
  - Henley
  - Murray
- **Furniture Upgrades**
  - 13 Elementary schools (46 classrooms)
  - 2 High Schools (14 classrooms)

# Schedule

(Projects Currently in Design)

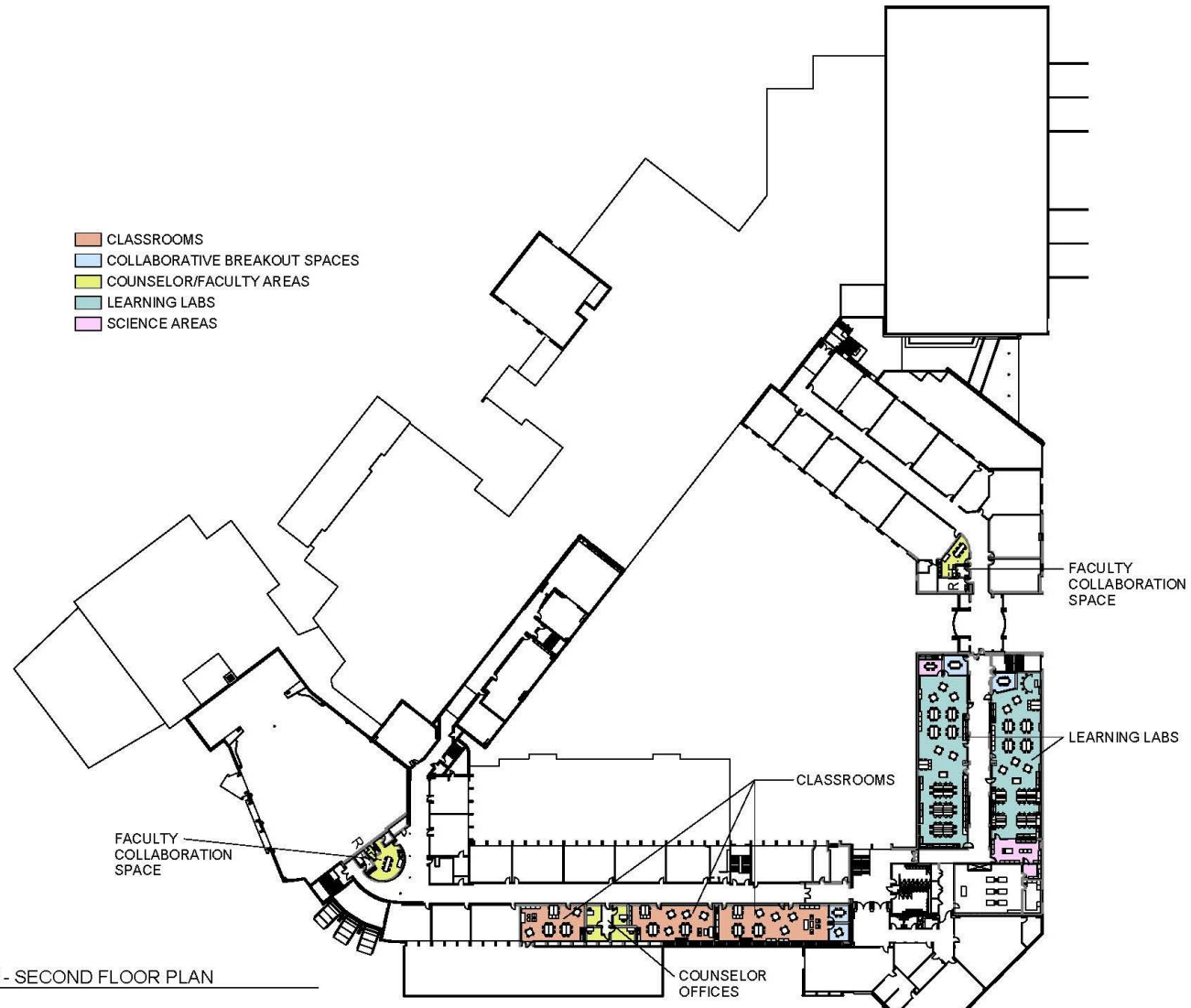
- **Design: September – January**
  - November 9: Design Development Action
- **Bid: February – March**
- **Construction: Begin June 2018**
  - Modernization projects complete August 2018
  - Security projects complete December 2018
  - Western Addition complete August 2019

# ALBEMARLE HIGH SCHOOL

Science Lab and  
Classroom Modernization

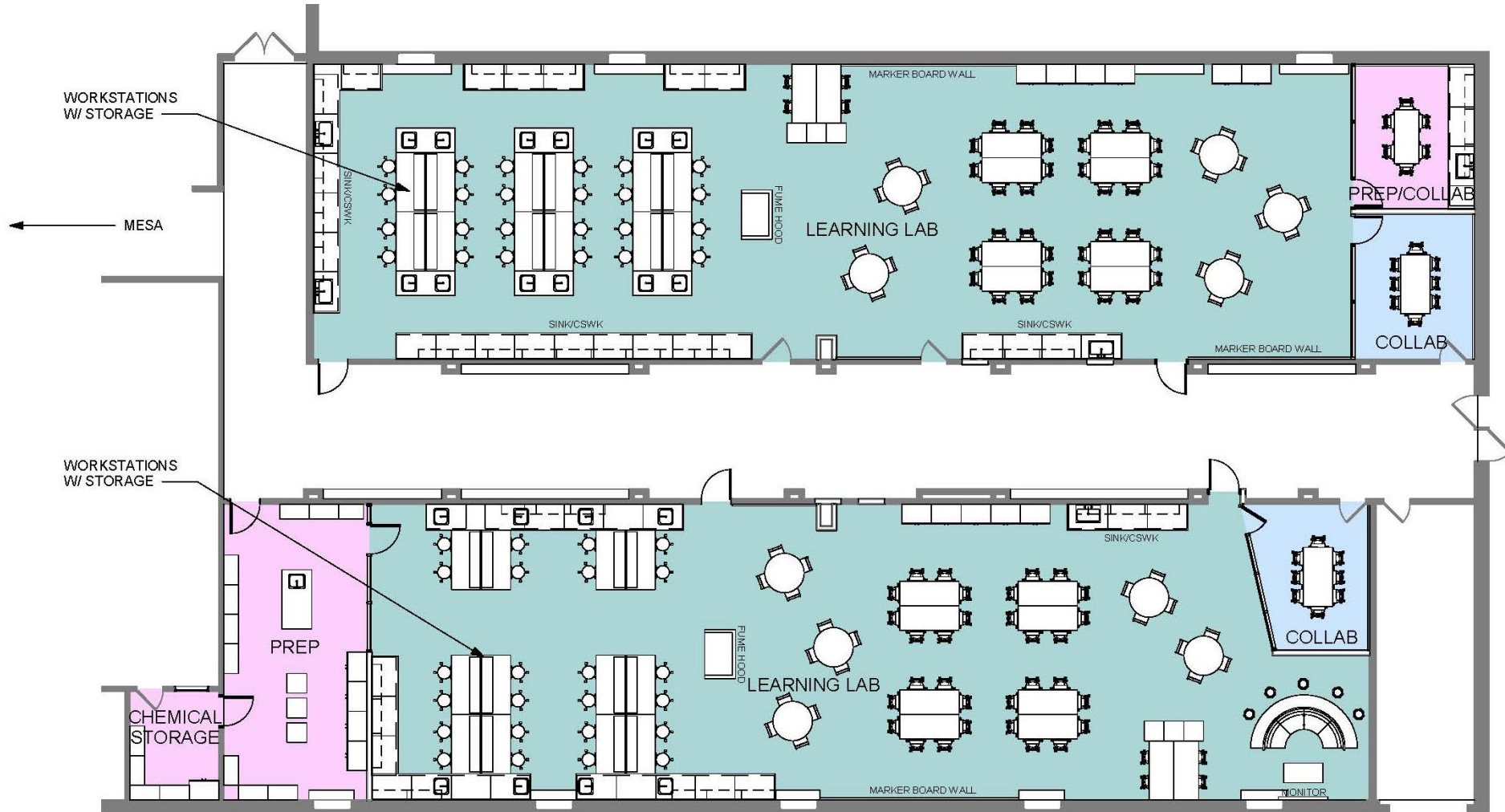
BCWH ARCHITECTS

- CLASSROOMS
- COLLABORATIVE BREAKOUT SPACES
- COUNSELOR/FACULTY AREAS
- LEARNING LABS
- SCIENCE AREAS



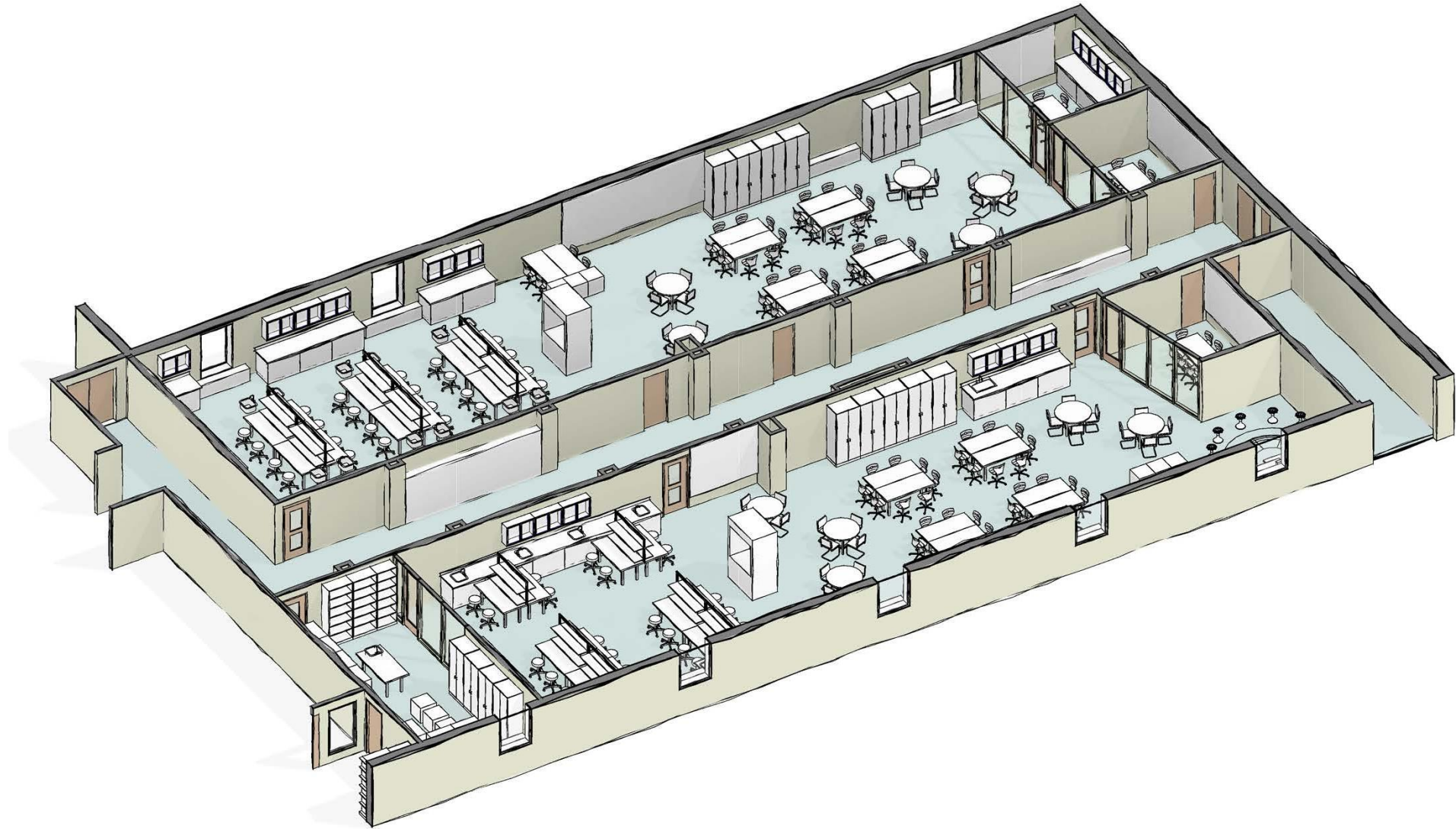
**1** Level 2 - SECOND FLOOR PLAN





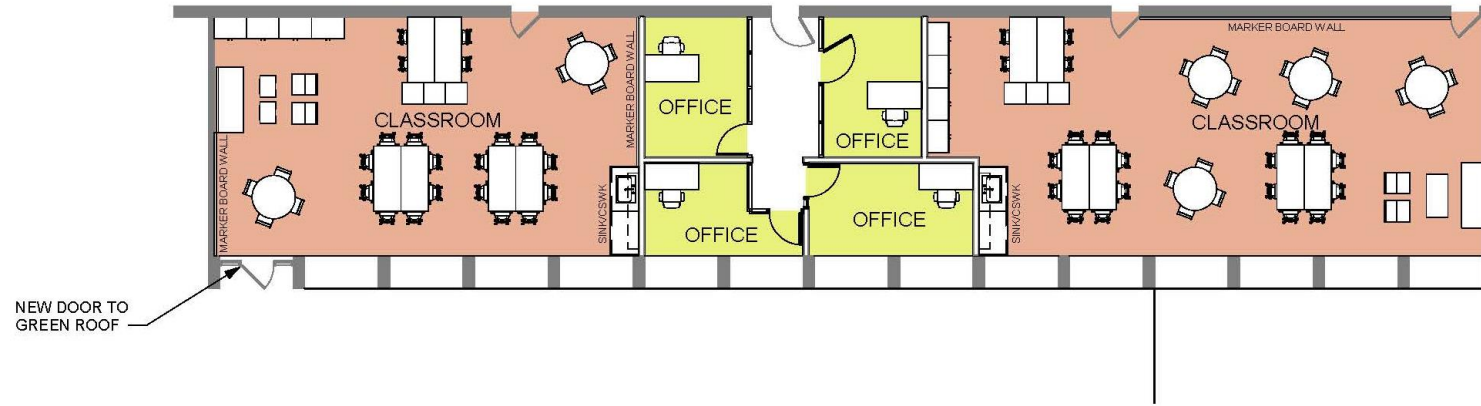
**1** Level 2 - LEARNING LABS



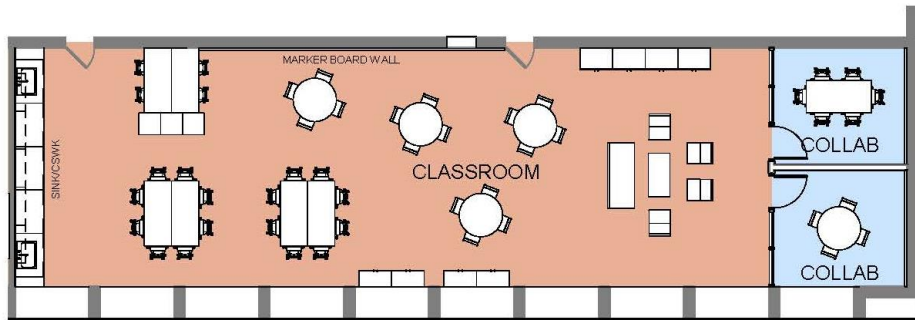


**1** LEARNING LABS AXON

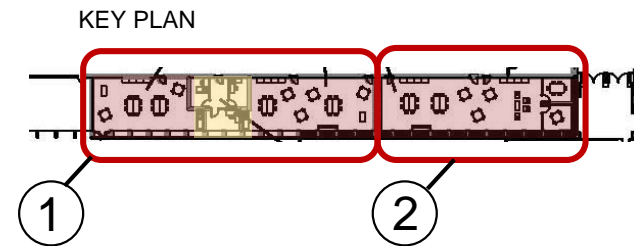
**Albemarle High School**



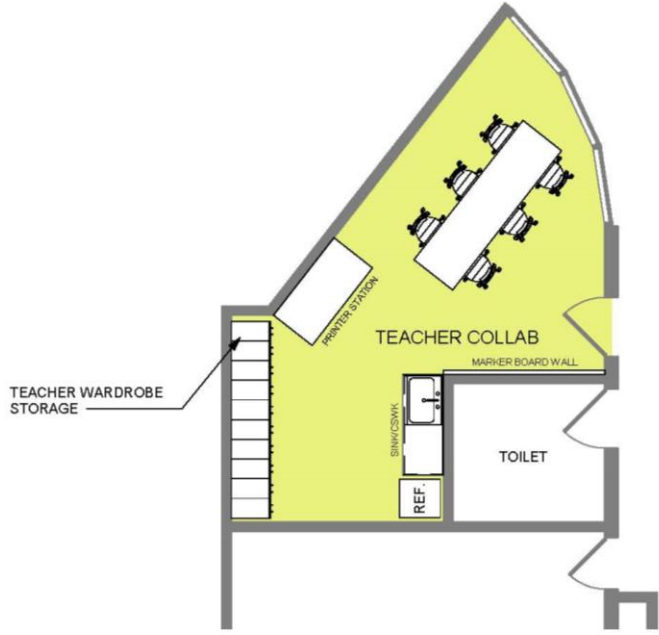
**1** Level 2 - ROOMS 227-228, 230  
3/32" = 1'-0"



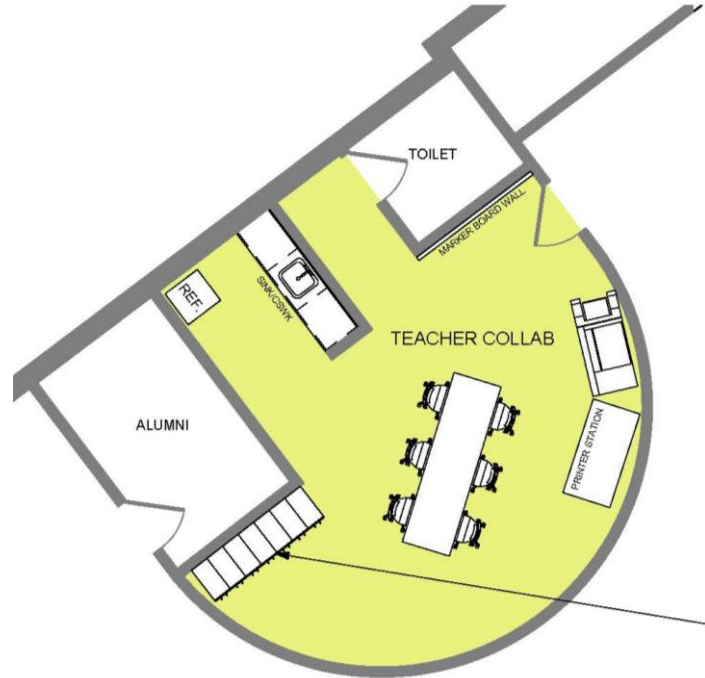
**2** Level 2 - ROOMS 233, 235-238  
3/32" = 1'-0"



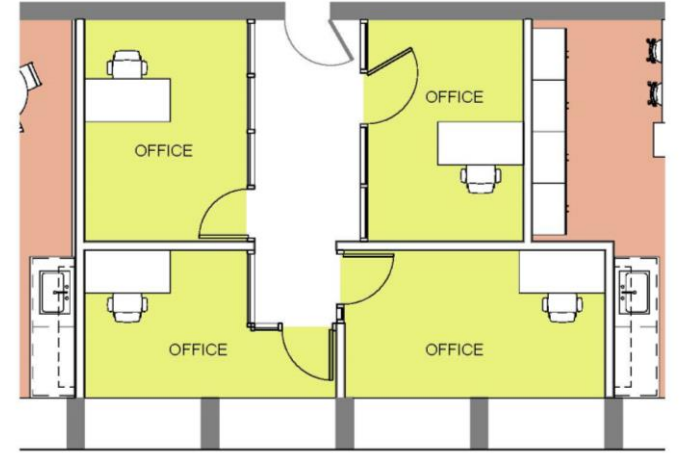




**1** Level 2 - ROOM 260  
3/16" = 1'-0"



**2** Level 2 - ROOM 217A  
3/16" = 1'-0"



**3** Level 2 - ROOM 230  
3/16" = 1'-0"

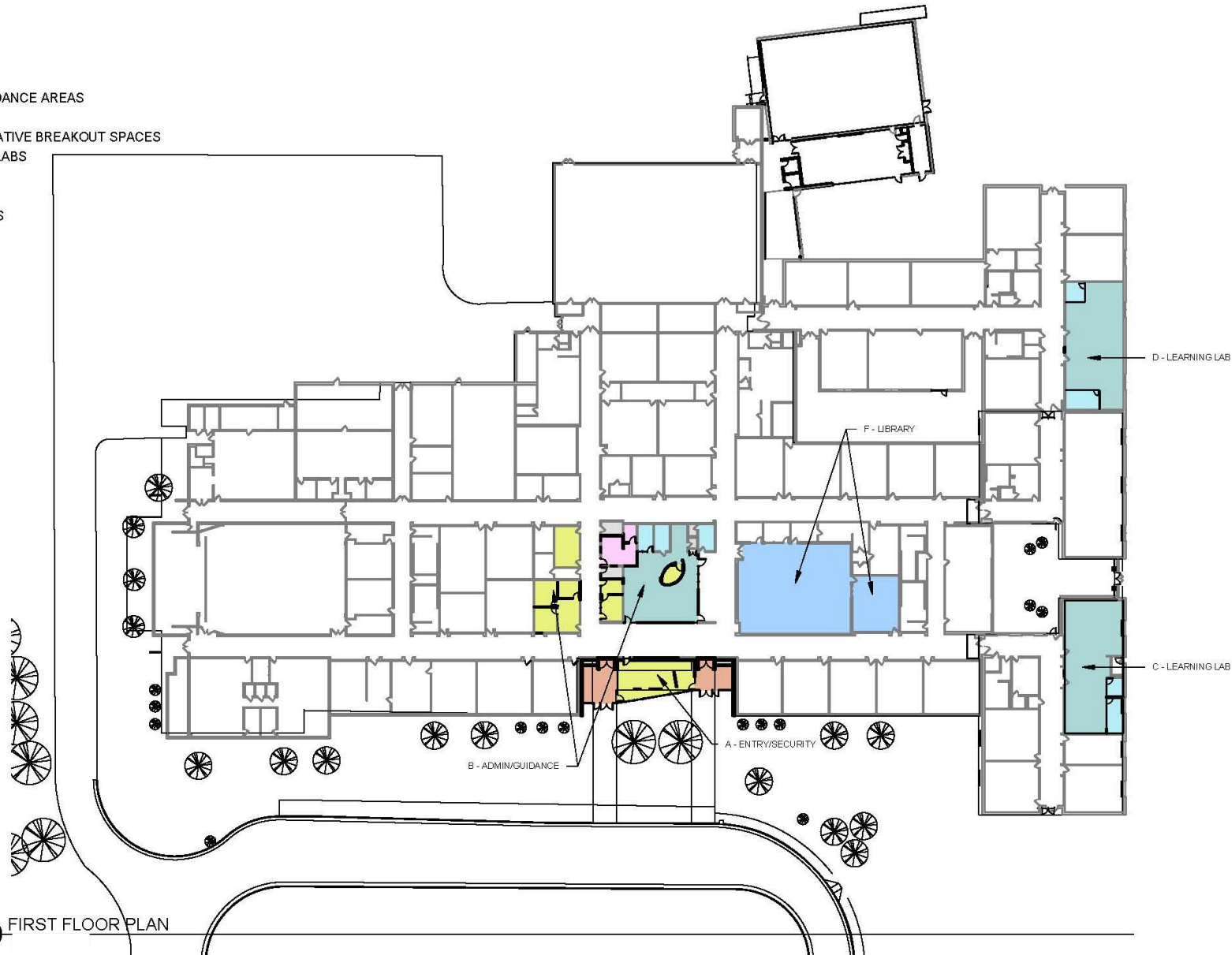


# HENLEY MIDDLE SCHOOL

Security Addition and  
Repurposing of Office  
Space, Science Lab,  
Classroom and Media  
Center Modernization

BCWH ARCHITECTS

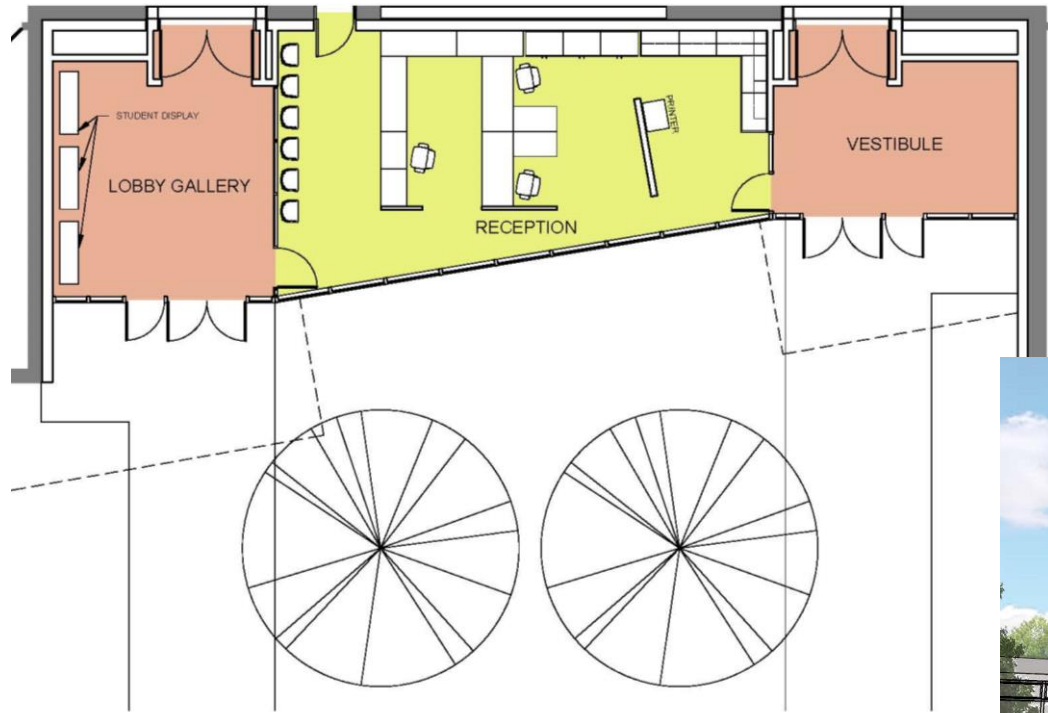
- ADMIN/GUIDANCE AREAS
- CLINIC
- COLLABORATIVE BREAKOUT SPACES
- LEARNING LABS
- LIBRARY
- TOILETS
- VESTIBULES



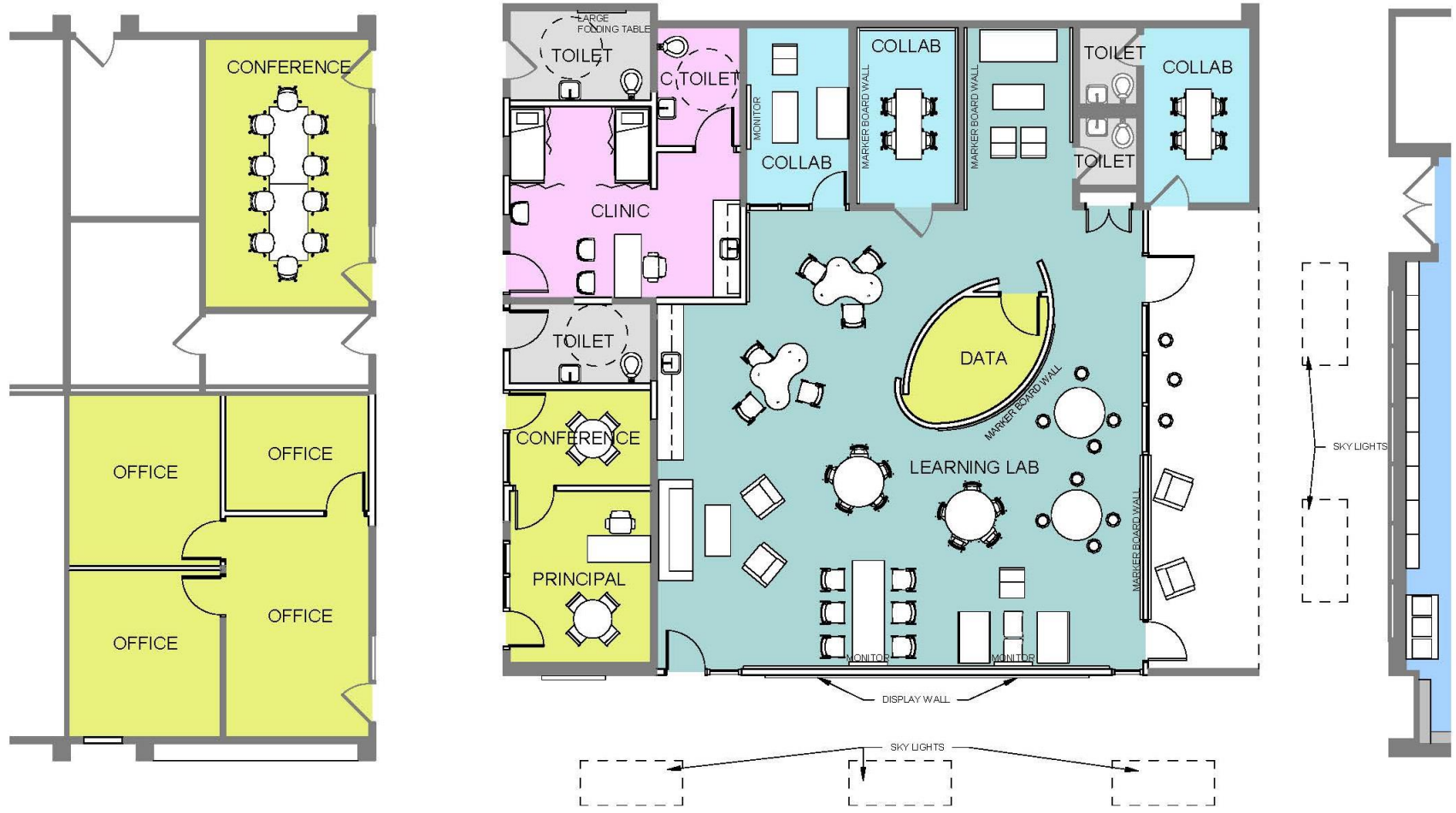
1 FIRST FLOOR PLAN



# Henley Middle School



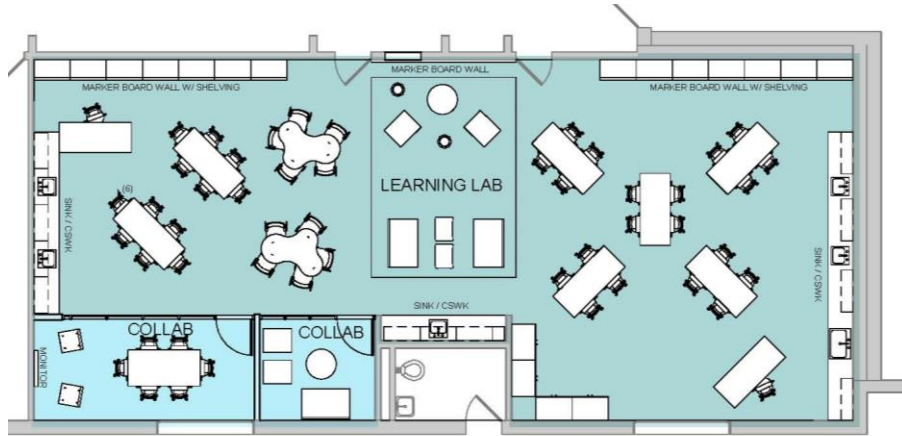
Henley Middle School



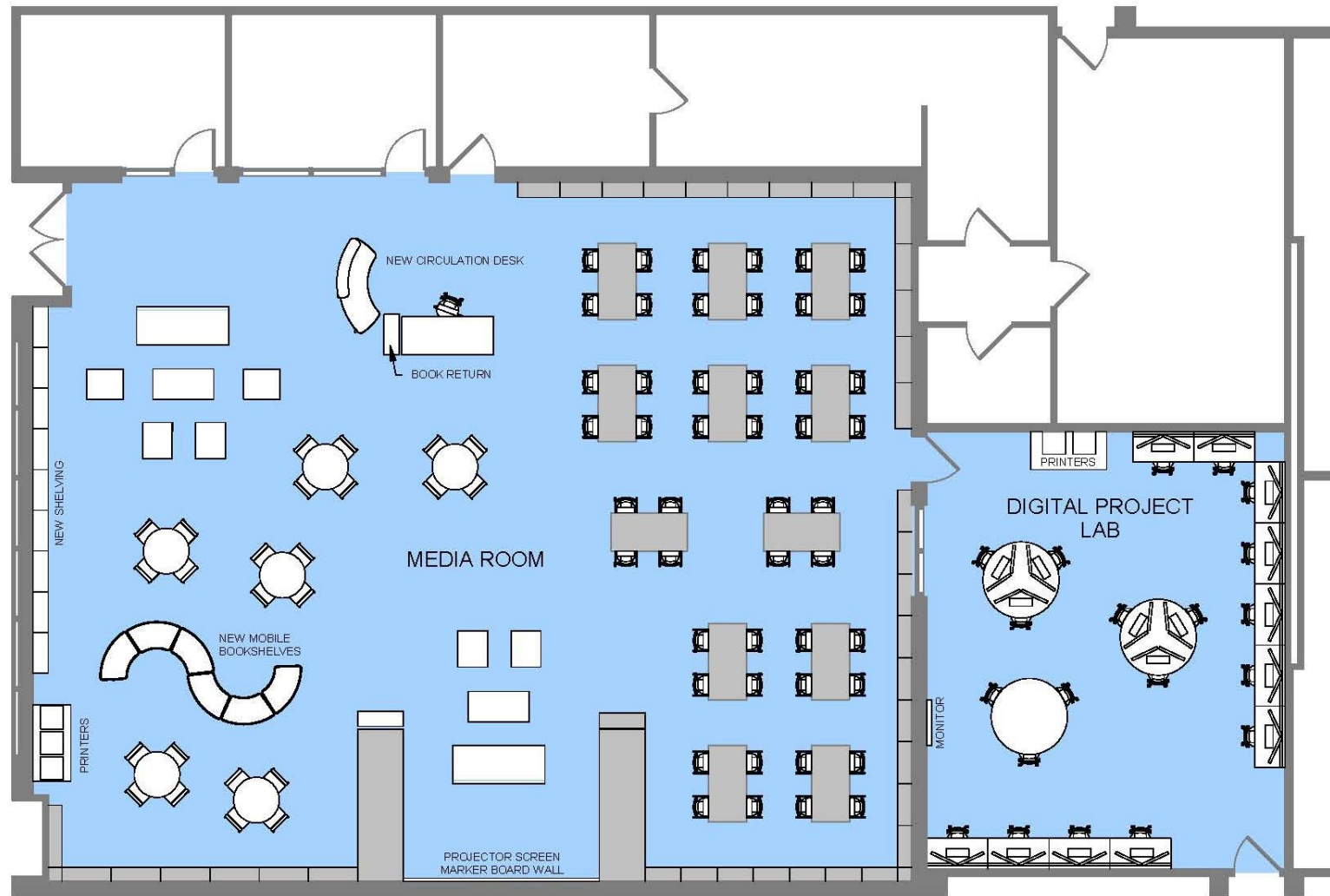
1 AREA B - ADMIN & GUIDANCE







Henley Middle School



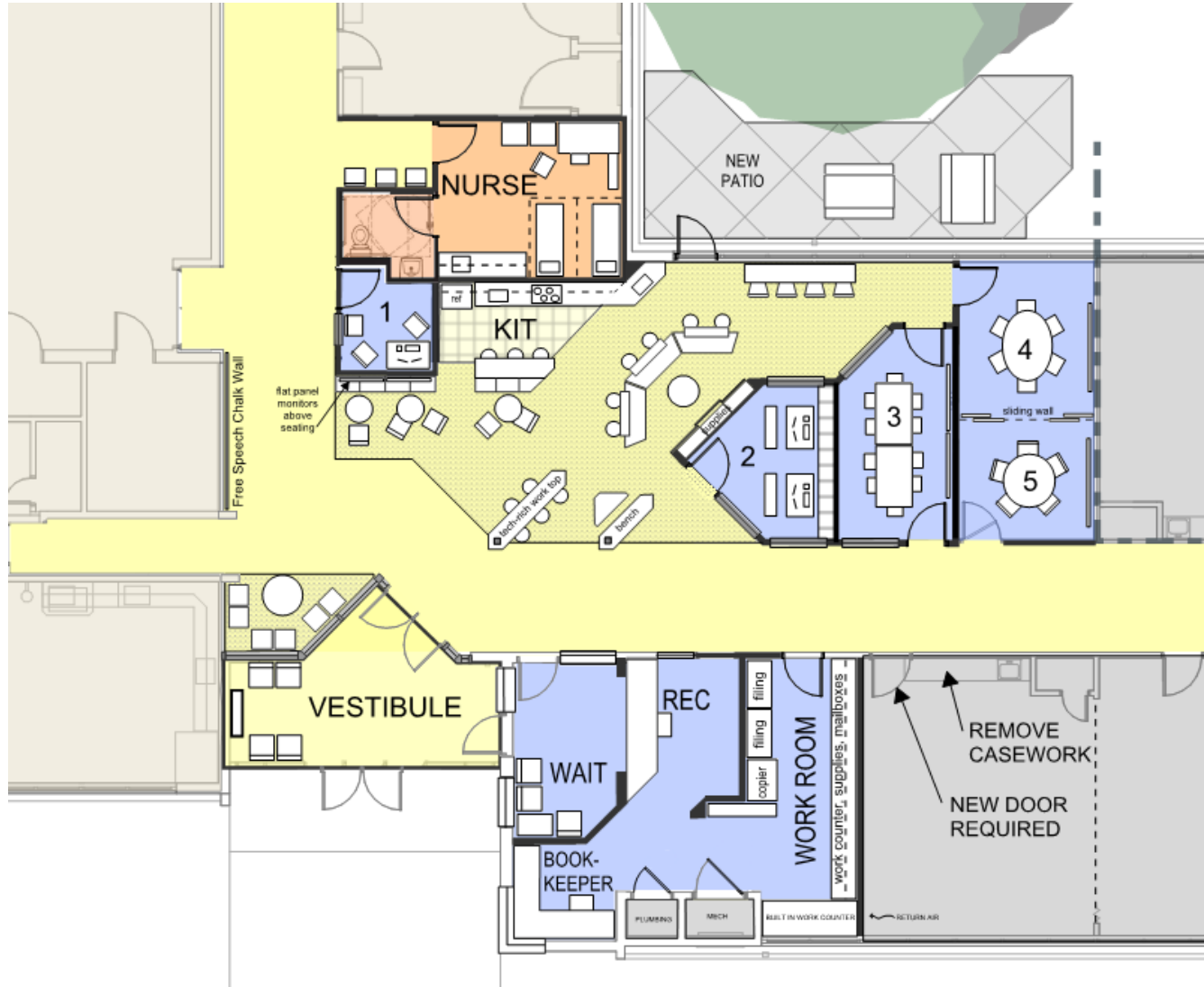
Henley Middle School



# MURRAY HIGH SCHOOL

Security Vestibule and  
Repurposing of Office  
Space

GRIMM & PARKER  
ARCHITECTS



- Administrative Spaces**  
(#s indicate shared spaces)
- Nurse**
- High School**
- Middle School**
- Circulation**



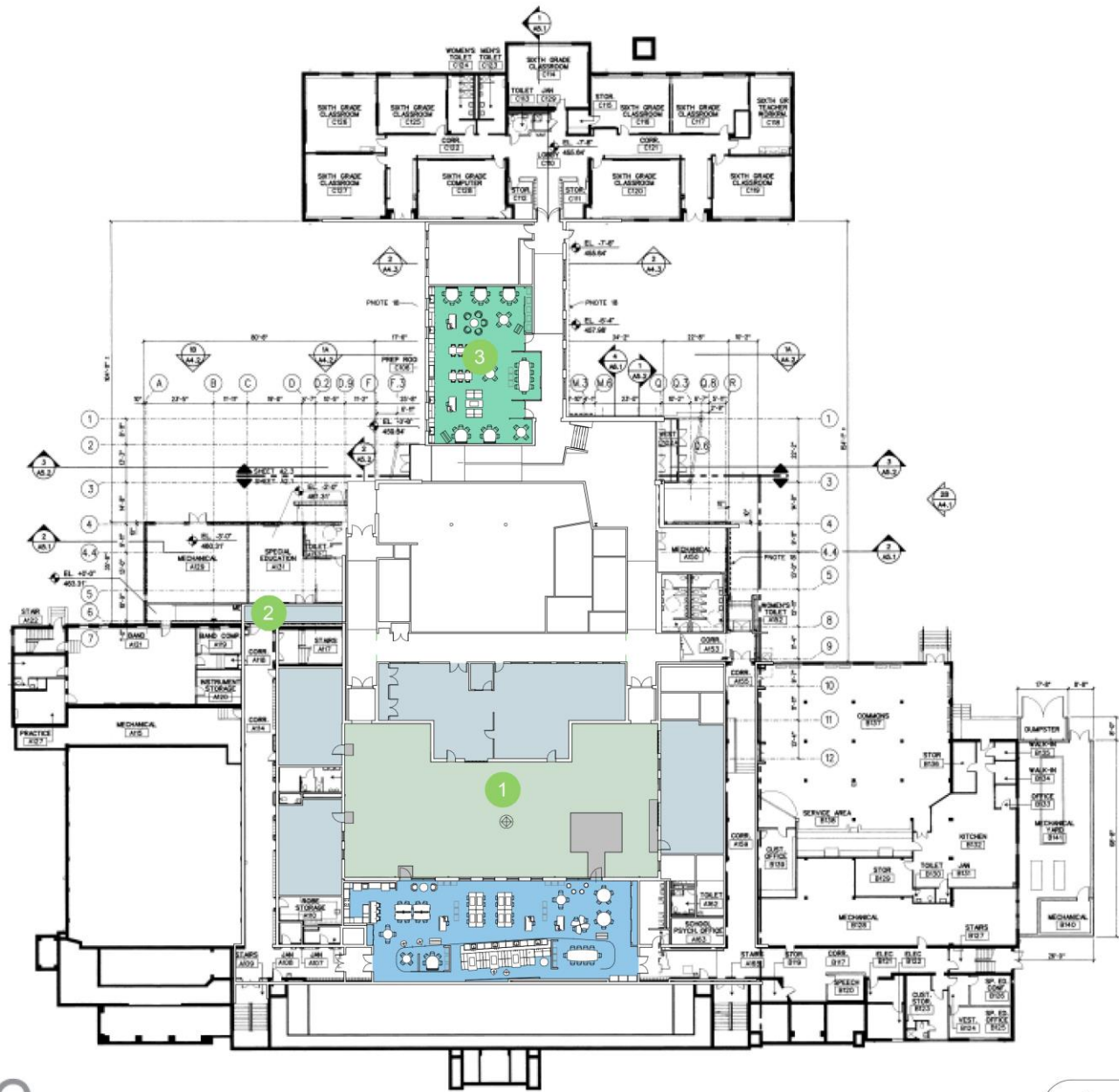




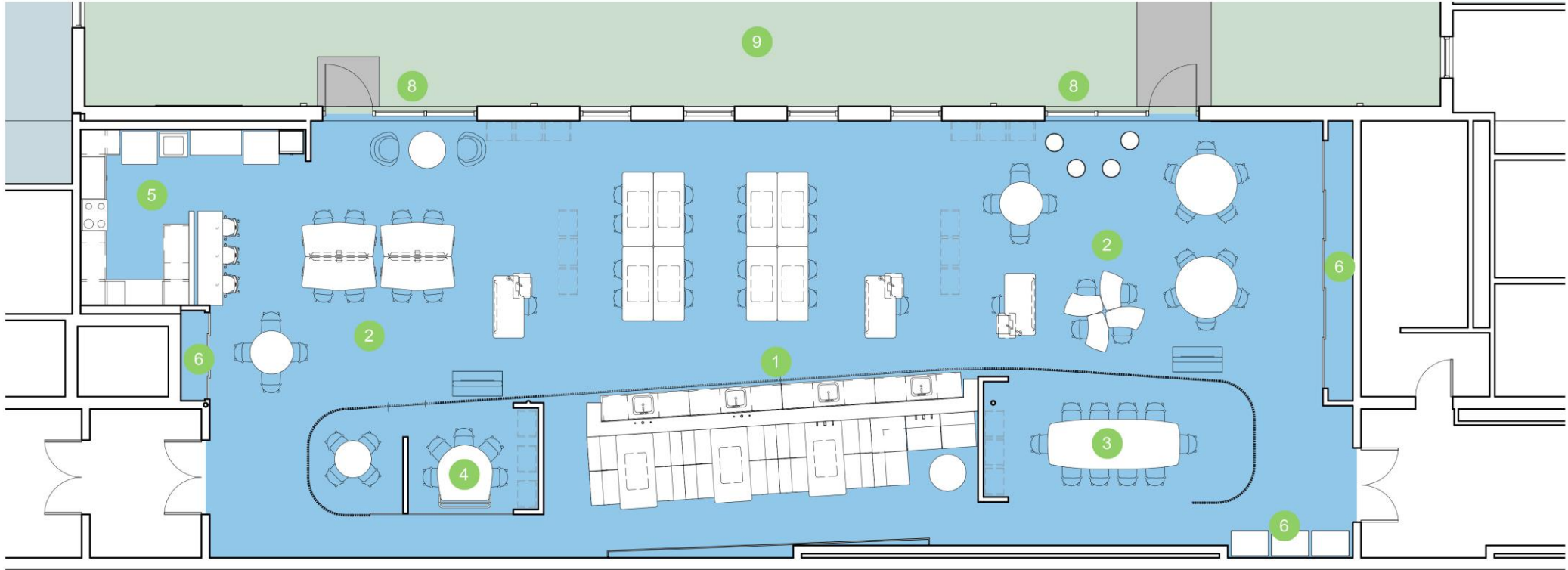
# BURLEY MIDDLE SCHOOL

Science Lab and Classroom  
Modernization

THRIVE ARCHITECTURE



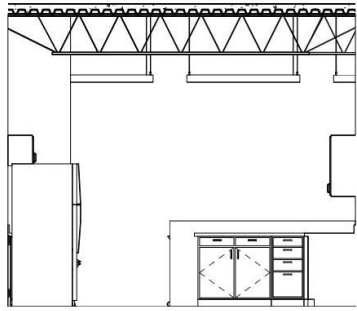
- 1 STEAM Ring
- 2 New Accessible Ramp
- 3 West Science Rooms



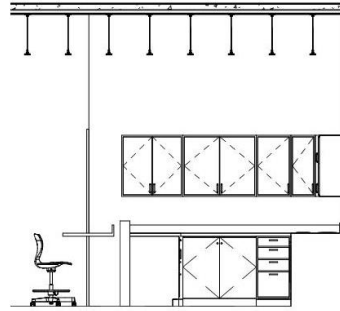
- 1 Intensive Science
- 2 Flexible Learning Space
- 3 Large Collaboration Space
- 4 Small Collaboration Space
- 5 Kitchen
- 6 Storage
- 7
- 8 New Exterior Openings
- 9 STEAM Courtyard



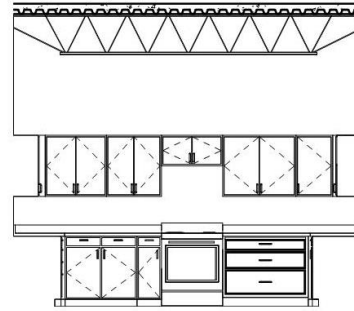




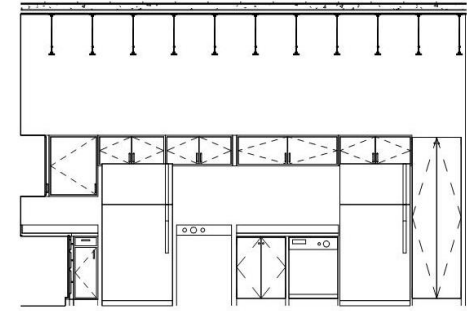
1 EAST KITCHEN ELEVATION NORTH  
1/4" = 1'-0"



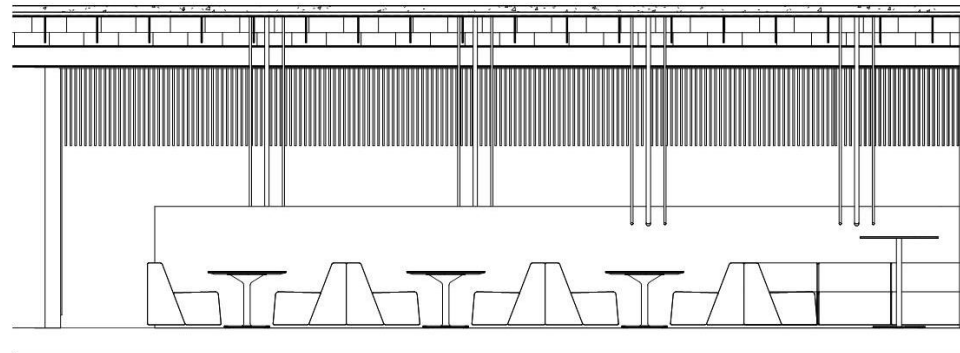
2 EAST KITCHEN ELEVATION EAST  
1/4" = 1'-0"



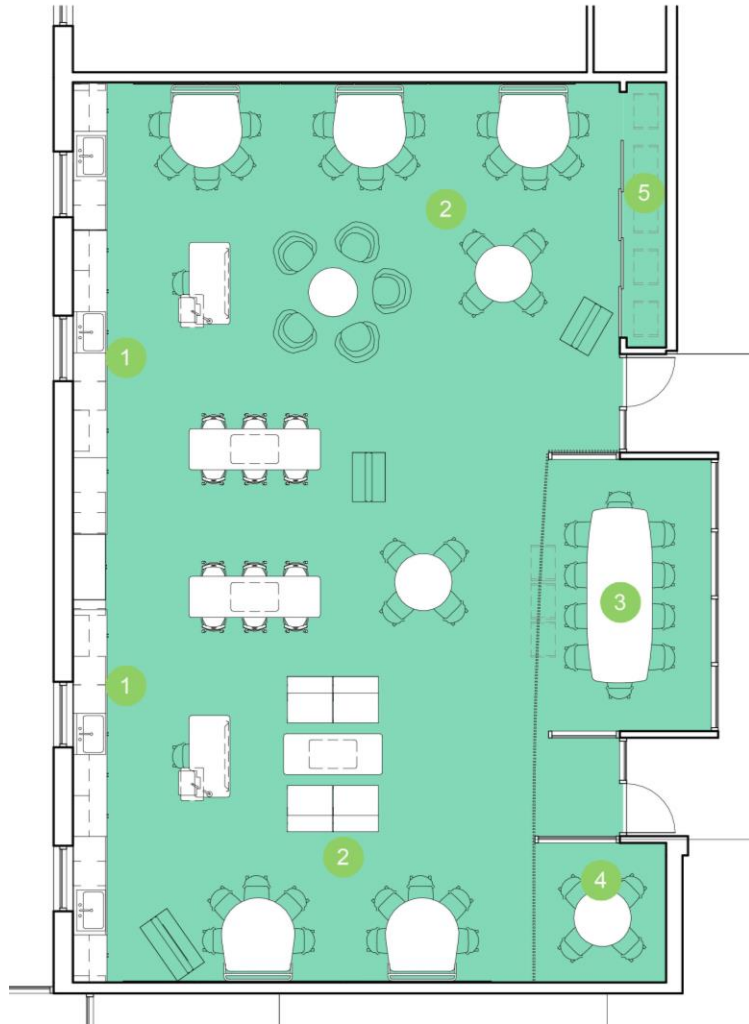
3 EAST KITCHEN ELEVATION SOUTH  
1/4" = 1'-0"



4 EAST KITCHEN ELEVATION WEST  
1/4" = 1'-0"



12 EAST SCIENCE INTERIOR ELEVATION COLLABORATION AREA  
1/4" = 1'-0"



# SUTHERLAND MIDDLE SCHOOL

Science Lab, Classroom  
and Media Center  
Modernization

RRMM ARCHITECTS

ROOM LEGEND

- COLLAB LAB
- EXPLORE LAB
- LEARNING LAB
- ADDITIVE BID ITEM 1
- ADDITIVE BID ITEM 2



