



BOYS & GIRLS CLUBS
OF CENTRAL VIRGINIA

Boys & Girls Clubs of Central Virginia Design Review



Today's Agenda:

- Project Team
- Project Scope
- Site Analysis
- Building Plans
- Exterior Character



Project Team



BOYS & GIRLS CLUBS
OF CENTRAL VIRGINIA

milestone

The logo for Milestone features the word "milestone" in a lowercase, sans-serif font. The "mile" is in green, and "stone" is in grey. A small green diamond is positioned between the "e" and "s".

TIMMONS GROUP
ENGINEERING | DESIGN | TECHNOLOGY

G+P
GRIMM AND PARKER

The logo for Grimm and Parker features the letters "G+P" in a large, grey, sans-serif font. A green plus sign is placed between the "G" and "P". Below this, the text "GRIMM AND PARKER" is written in a smaller, grey, sans-serif font.

Barton
Malow

The logo for Barton Malow features the word "Barton" in a large, bold, blue, sans-serif font. Below it, a solid blue square is followed by the word "Malow" in a large, bold, blue, sans-serif font.

Today's Agenda:

- Project Team
- **Project Scope**
- Site Analysis
- Building Plans
- Exterior Character



Project Scope

SITE PROGRAMMING

- +/- 60 Parking Spaces
- Bus Drop-off / Pick-up
- Recreation Field
- Playground
- Sports Court
- Raised Garden
- Trail(s)

CLUB PROGRAMMING

- Youth Development Rooms (K-5)
- Teen Development Rooms (6-12)
- Multipurpose Room
- Instructional Kitchen
- STEM Lab
- Gym and Auxiliary Gym
- 4 Squash Courts
- Club Staff Offices
- BGC Organization Offices
- Capacity: 300

Today's Agenda:

- Project Team
- Project Scope
- **Site Analysis**
- Building Plans
- Exterior Character





Site

Mary Carr Greer Elementary School

Jack Jouett Middle School

Albemarle County Drivers Training

Ivy Creek School

Albemarle County Public Schools Transportation

Loaves & Fishes Food Pantry

Unity of Charlottesville

Albemarle Countertop

RE Lee & Son

Connect Church

All Star Barbers

Shelter For Help In Emergency

Whitewood Rd

Cville's Sharpest

Bright H

Albemarle County Building Services...

Piedmont Pediatric Dentistry

Central Virginia Oral & Facial

Olde Oak Ct

Arbor Crest Apartments

Google

Mary Carr Greer ES

Jack Jouett MS

Albemarle HS

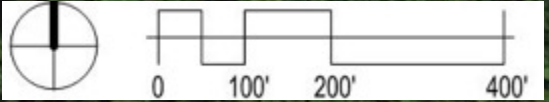
Ivy Creek School



Site

Lambs Lane

Albemarle County Drivers
Training

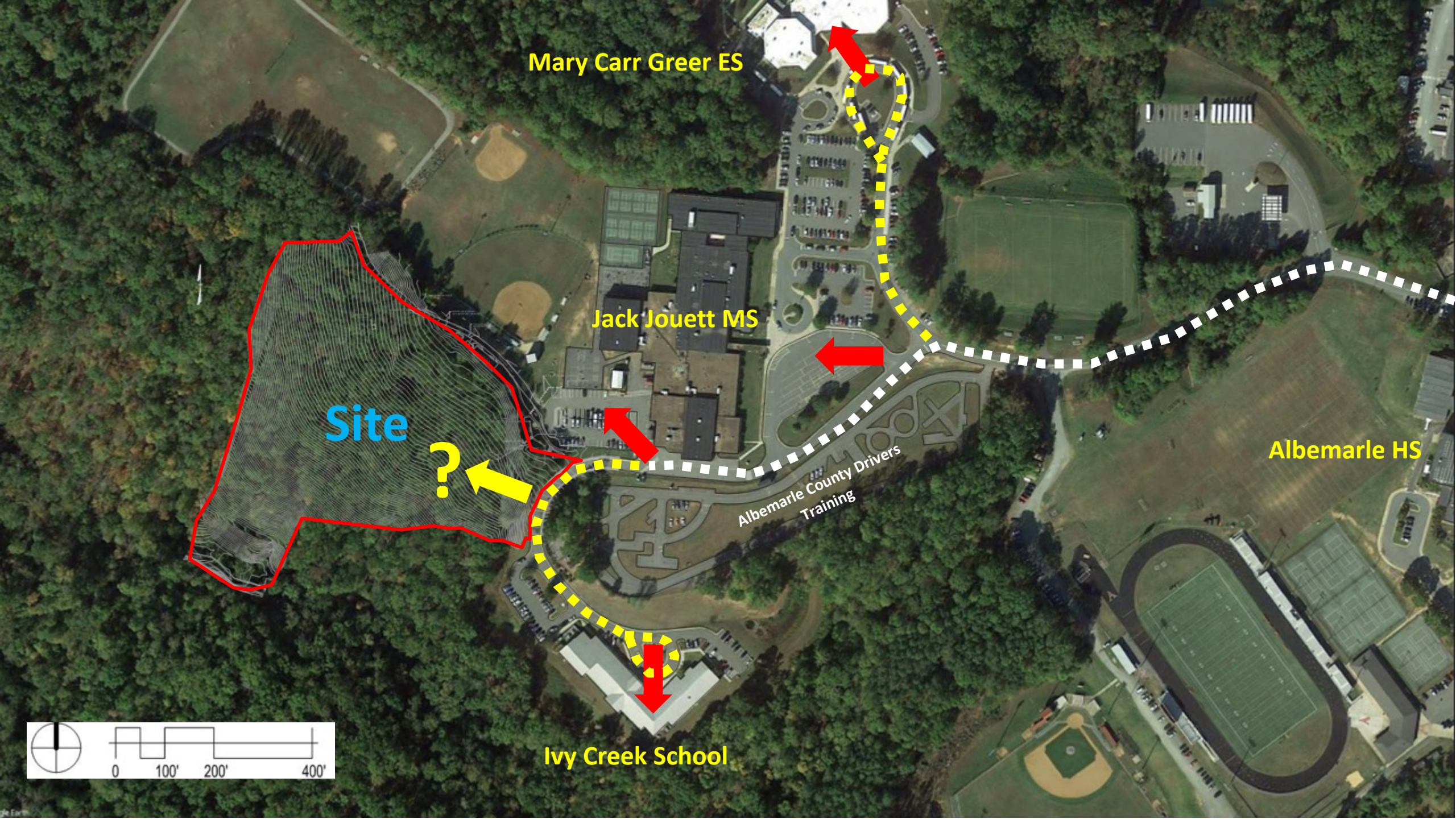


Site
↓

Ivy Creek School

Jack Jouett MS





Mary Carr Greer ES

Jack Jouett MS

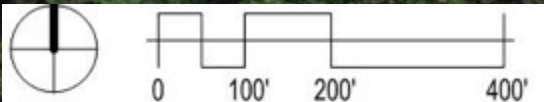
Albemarle HS

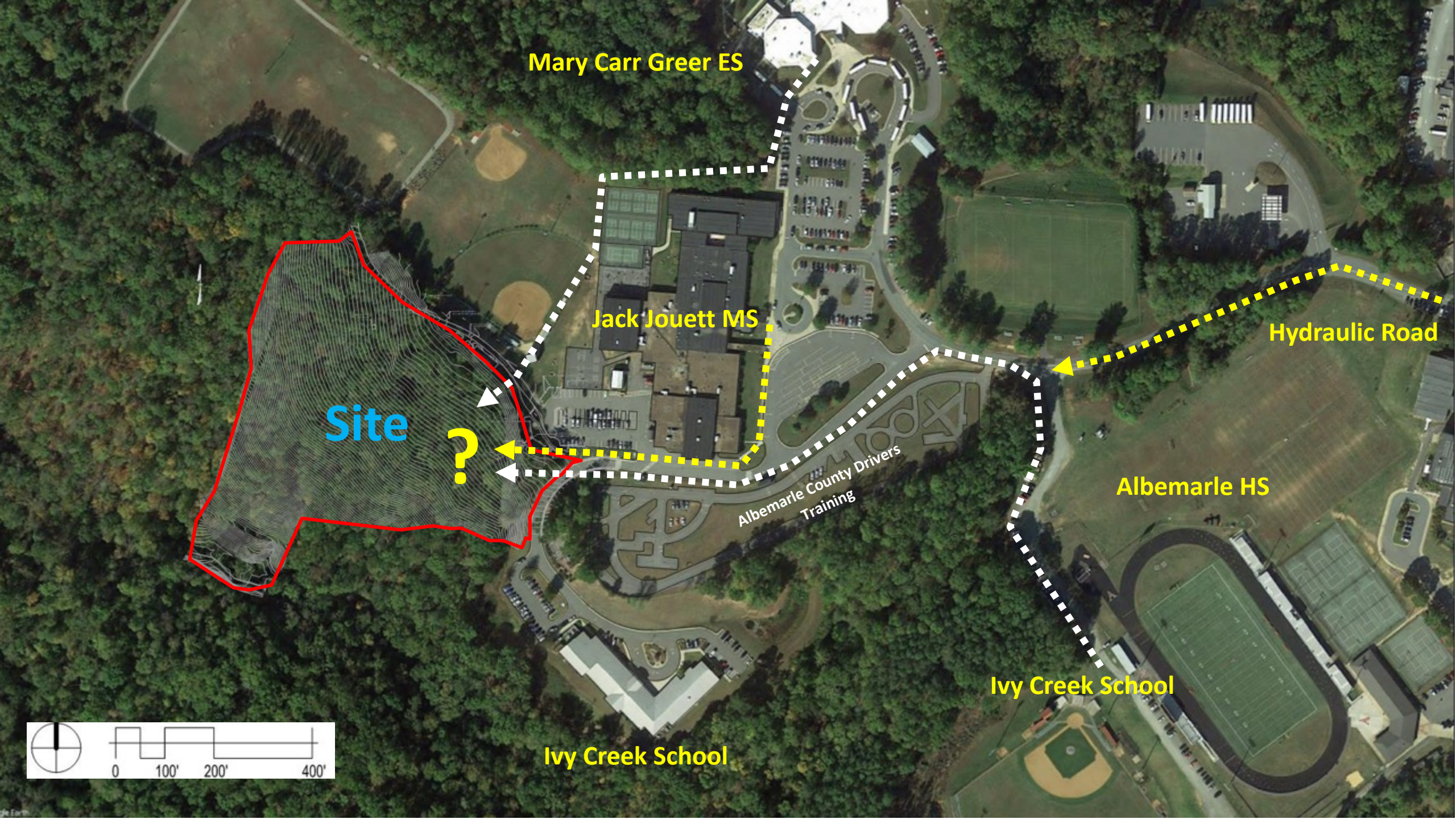
Ivy Creek School

Site

?

Albemarle County Drivers
Training





Mary Carr Greer ES

Jack Jouett MS

Hydraulic Road

Site

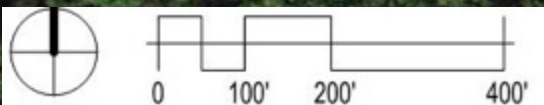
?

Albemarle HS

Albemarle County Drivers
Training

Ivy Creek School

Ivy Creek School



Walking path from
Mary Carr Greer ES

Jack Jouett MS

Lambs Lane

Vehicular Access Option 1

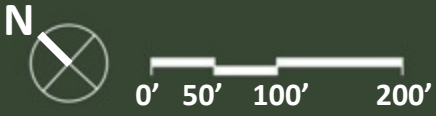
Parking

Building

Playground

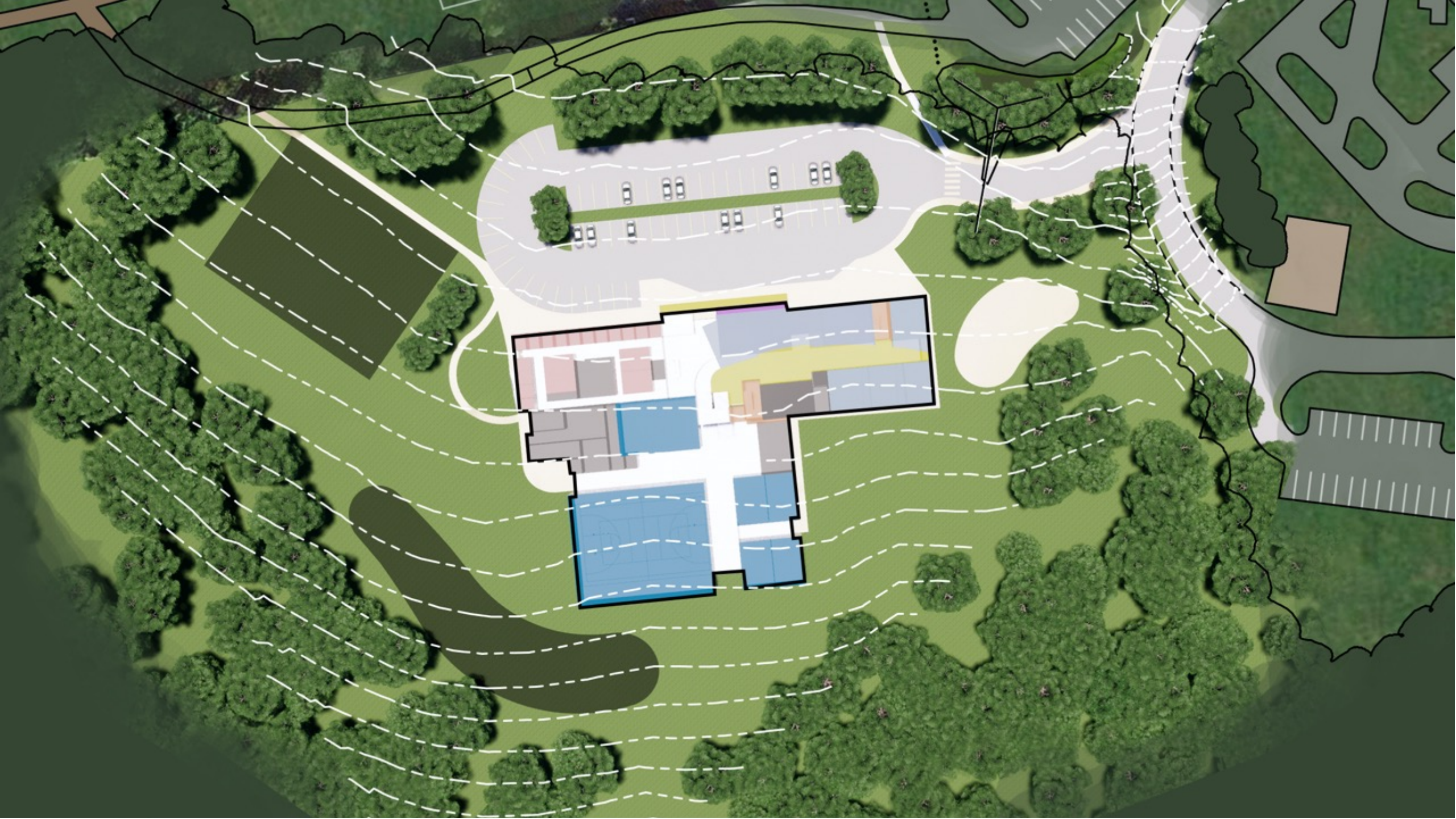
Play Field

Ivy Creek School





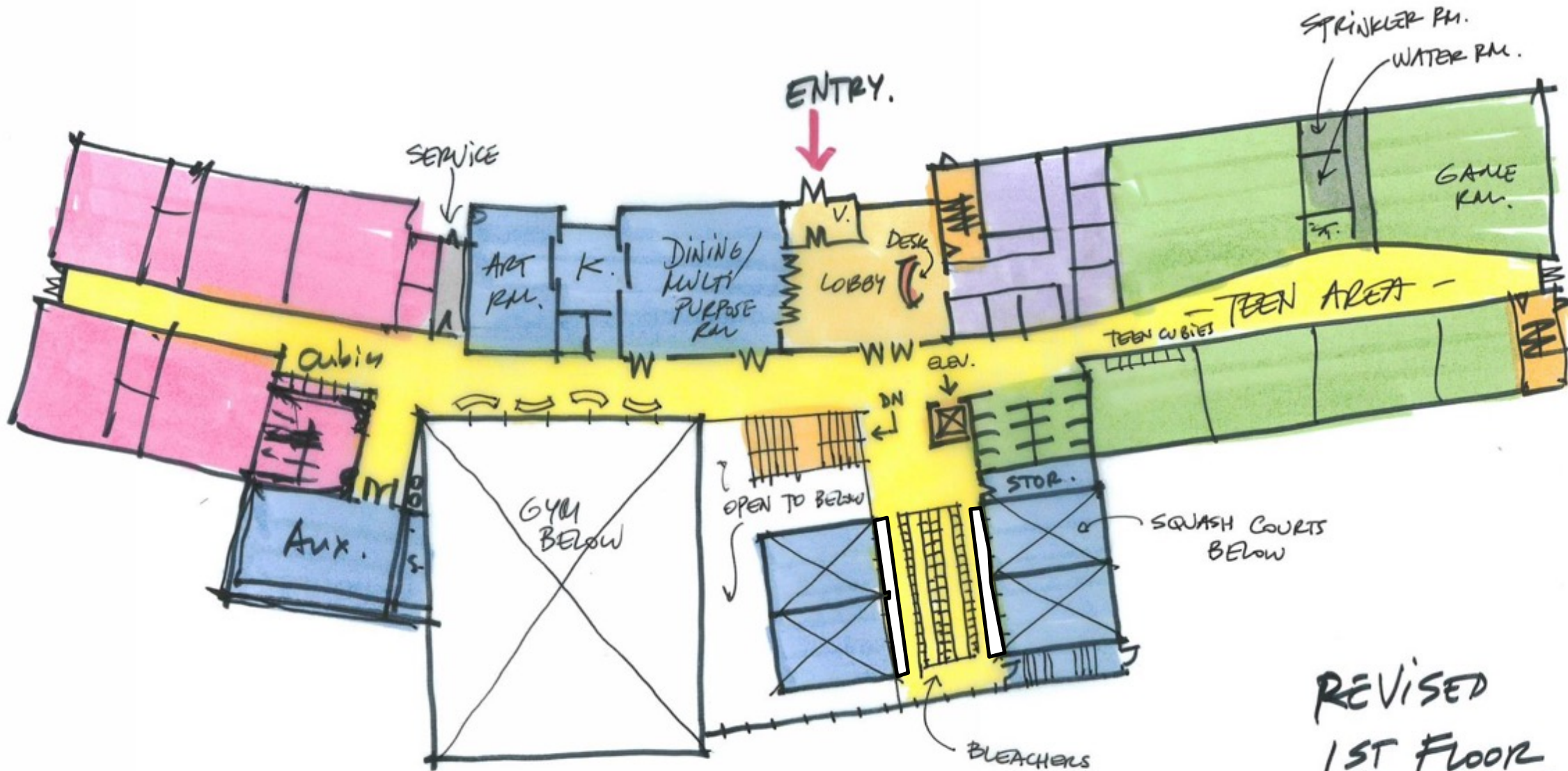




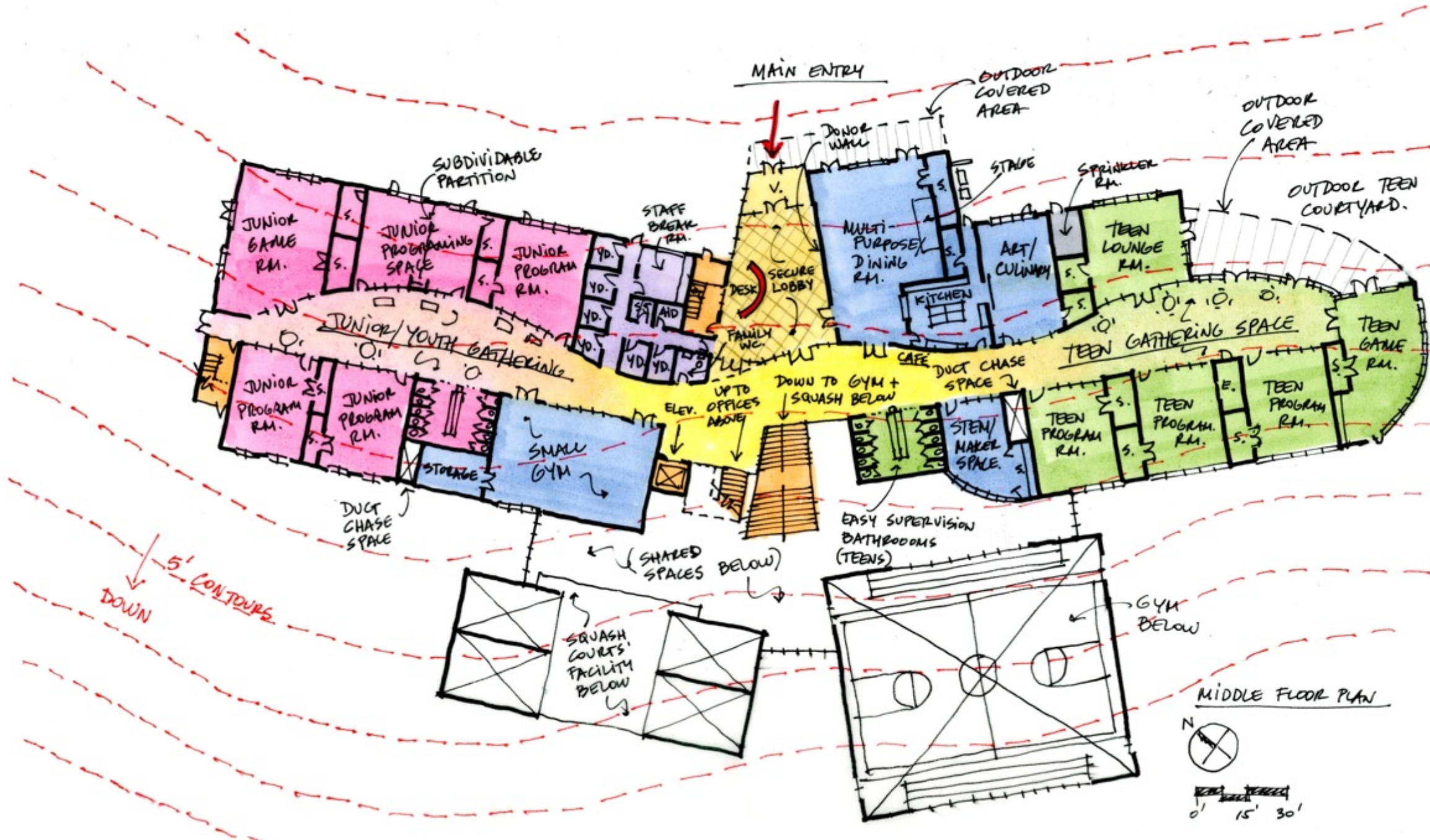
Today's Agenda:

- Project Team
- Project Scope
- Site Analysis
- **Building Plans**
- Exterior Character





REVISED
1ST FLOOR



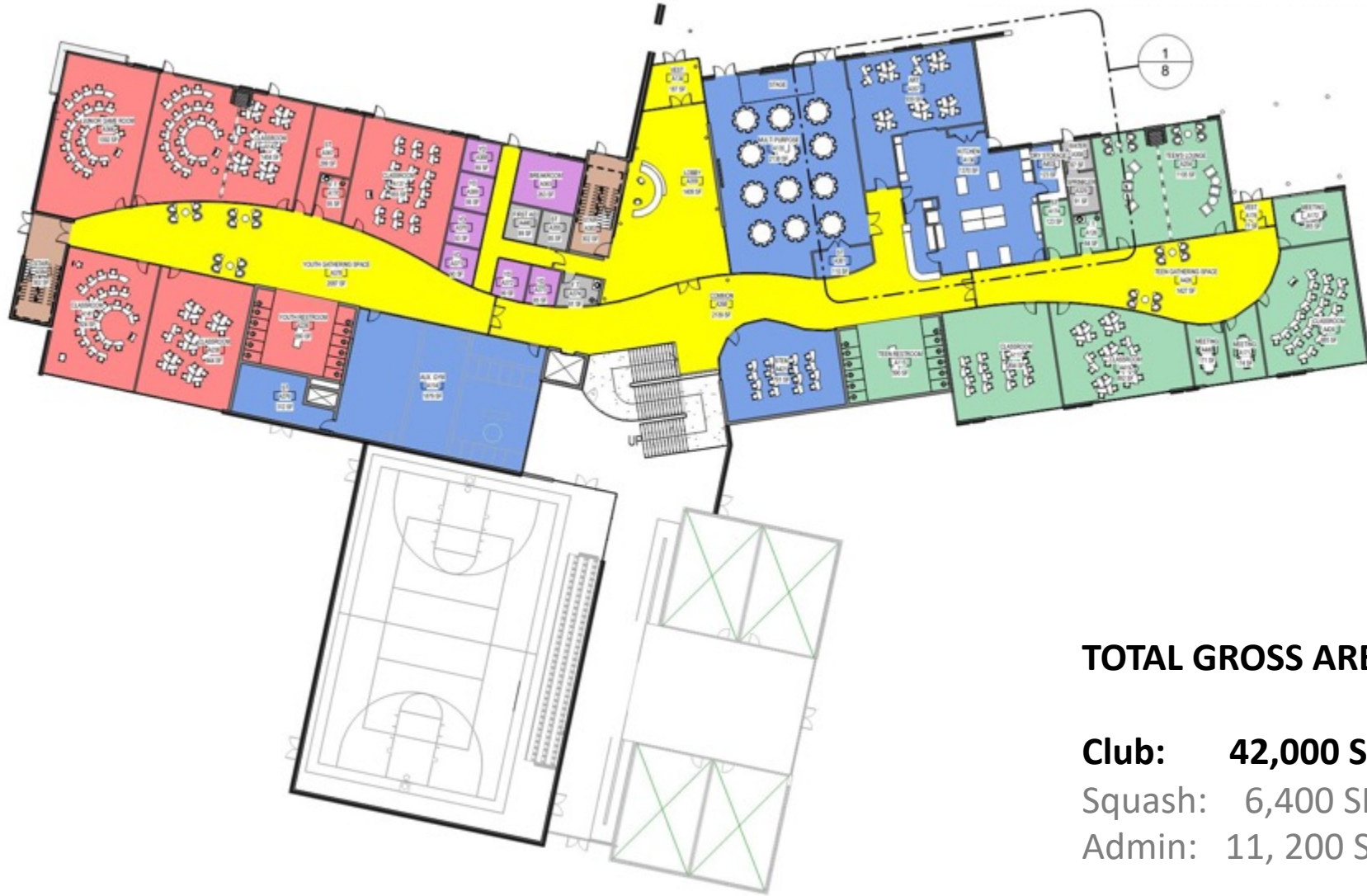


FIELD

TEEN GARDEN

TRASH

OUTDOOR BASKETBALL COURT



TOTAL GROSS AREA: 59,600 SF

Club: 42,000 SF

Squash: 6,400 SF

Admin: 11,200 SF

1

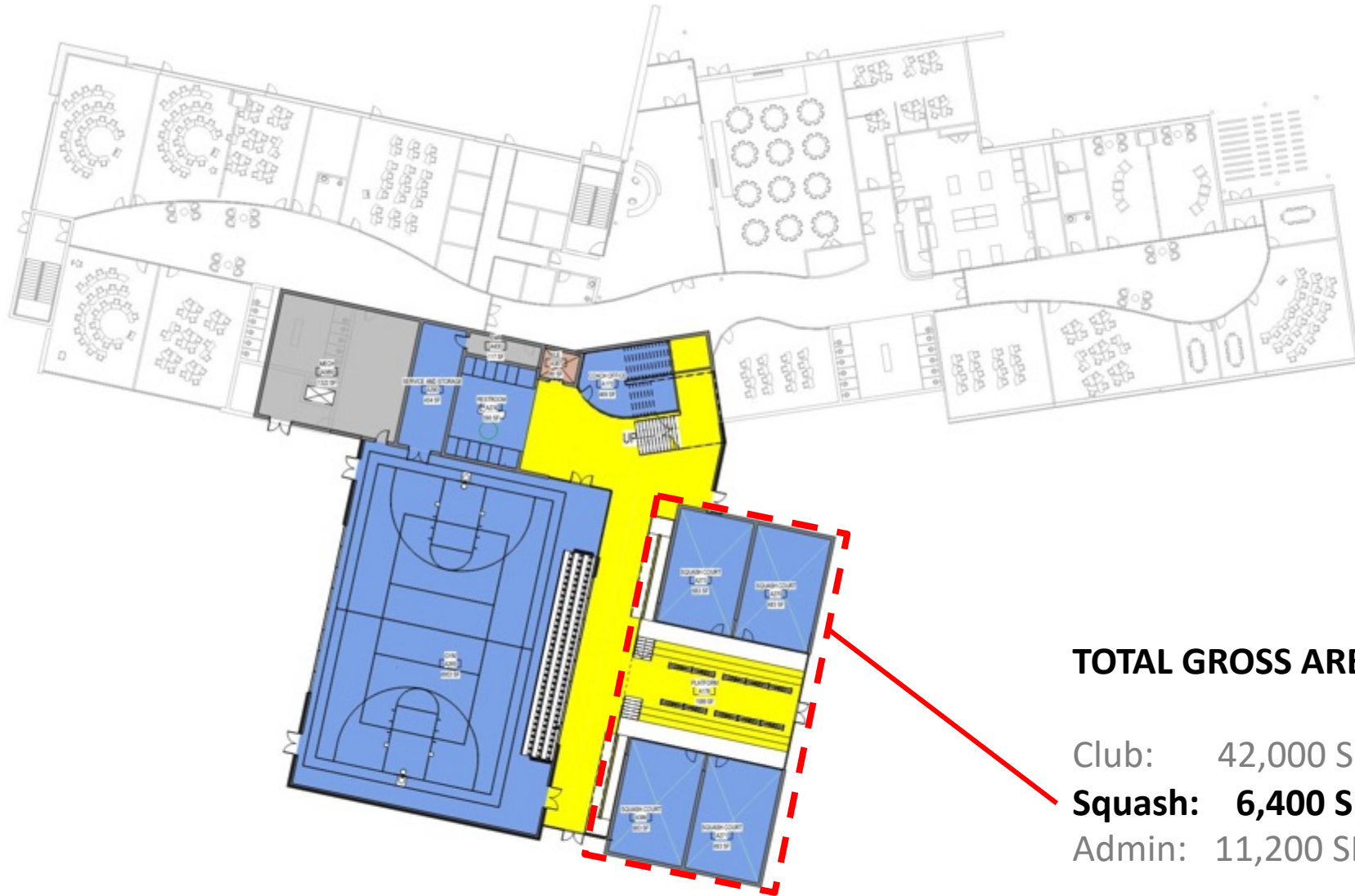
MAIN LEVEL CLUB

1" = 30'-0"



SCALE: 1/30" = 1'-0"





TOTAL GROSS AREA: 59,600 SF

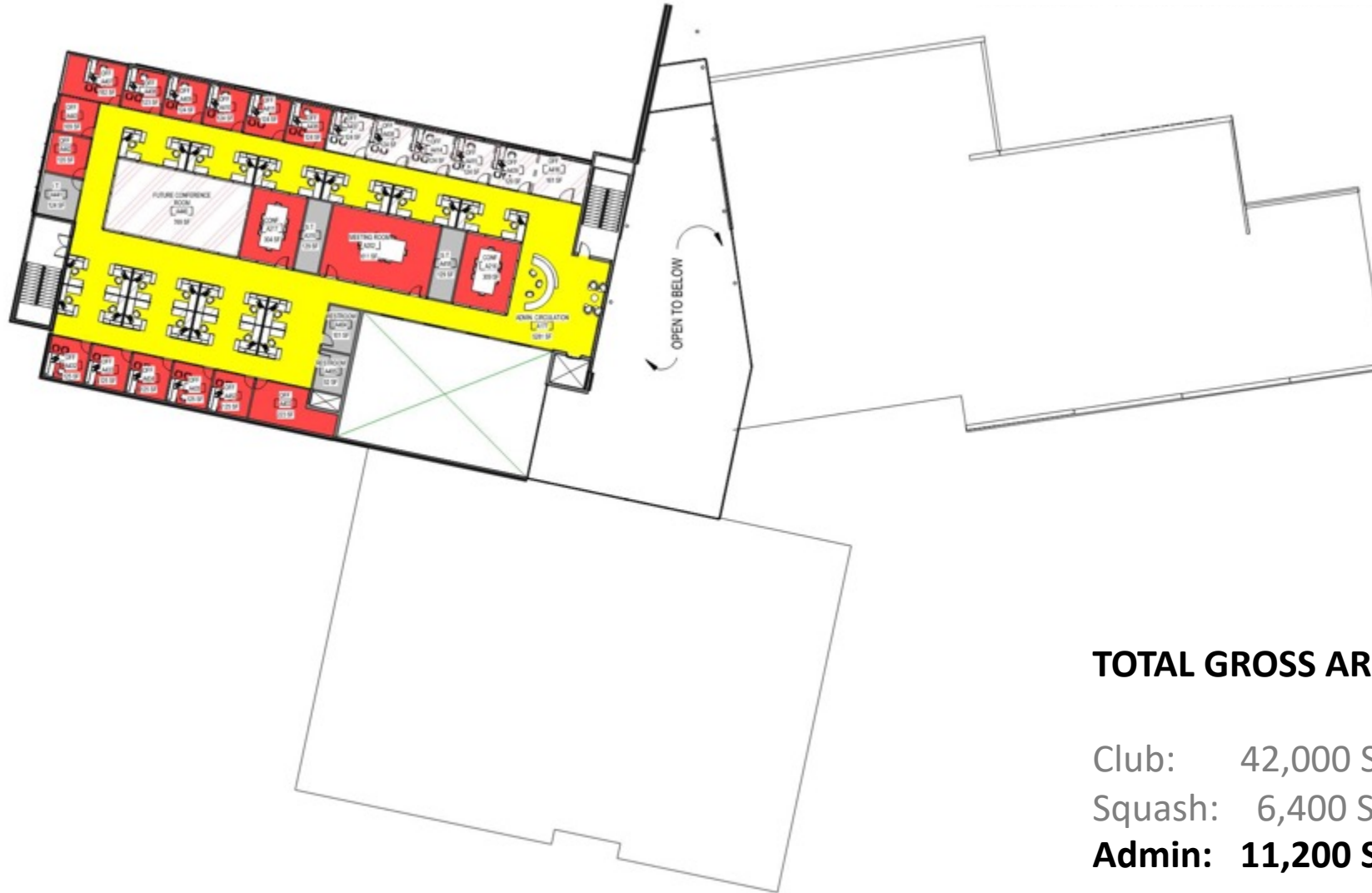
Club: 42,000 SF

Squash: 6,400 SF

Admin: 11,200 SF

1 LOWER LEVEL CLUB & SQUASH
1" = 30'-0"





TOTAL GROSS AREA: 59,600 SF

Club: 42,000 SF

Squash: 6,400 SF

Admin: 11,200 SF

1

UPPER LEVEL ADMIN

1" = 30'-0"



SCALE: 1/30" = 1'-0"







Today's Agenda:

- Project Scope
- Project Team
- Site Analysis
- Building Plans
- **Exterior Character**











BOYS AND GIRLS CLUB

BOYS & GIRLS CLUB
OF THE UNITED STATES



BOYS AND GIRLS CLUB

BOYS AND GIRLS CLUB
OF THE WORLD



BOYS & GIRLS CLUBS
OF CENTRAL VIRGINIA



BOYS AND GIRLS CLUB



BOYS & GIRLS CLUBS
OF CENTRAL VIRGINIA

End of Presentation