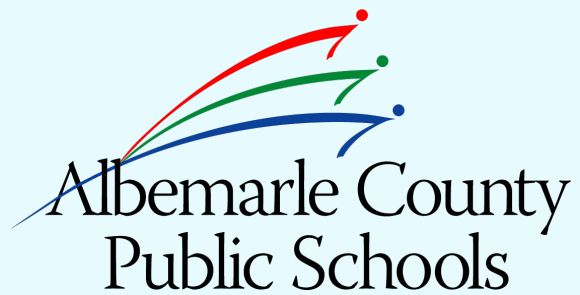


AHS 2nd Floor Connector Schematic Design

January 25, 2024



Agenda

1 Project Overview

2 Elevations

3 Budget

4 Schedule



Strategic Plan: Learning for All

VISION

Our learners are engaged in authentic, challenging, and relevant learning experiences, becoming lifelong contributors and leaders in our dynamic and diverse society.

MISSION

Working together as a team, we will end the predictive value of race, class, gender, and special capacities for our children's success through high-quality teaching and learning for all. We seek to build relationships with families and communities to ensure that every student succeeds.

We will know every student.

VALUES

Equity
Excellence
Family and Community
Wellness

GOALS



Thriving Students



Affirming and Empowering Communities



Equitable, Transformative Resources



Board Approvals – Facility Design

Policy FEA,
Facility Design:

Architectural/Engineering Selection Committee will be appointed jointly by the School Board and the Superintendent when the fee for such services is expected to exceed \$100,000.

Policy FA,
Building and Naming Facilities:

School Board will approve the schematic design for the Facility and the design development before approval to proceed to the construction document phase.



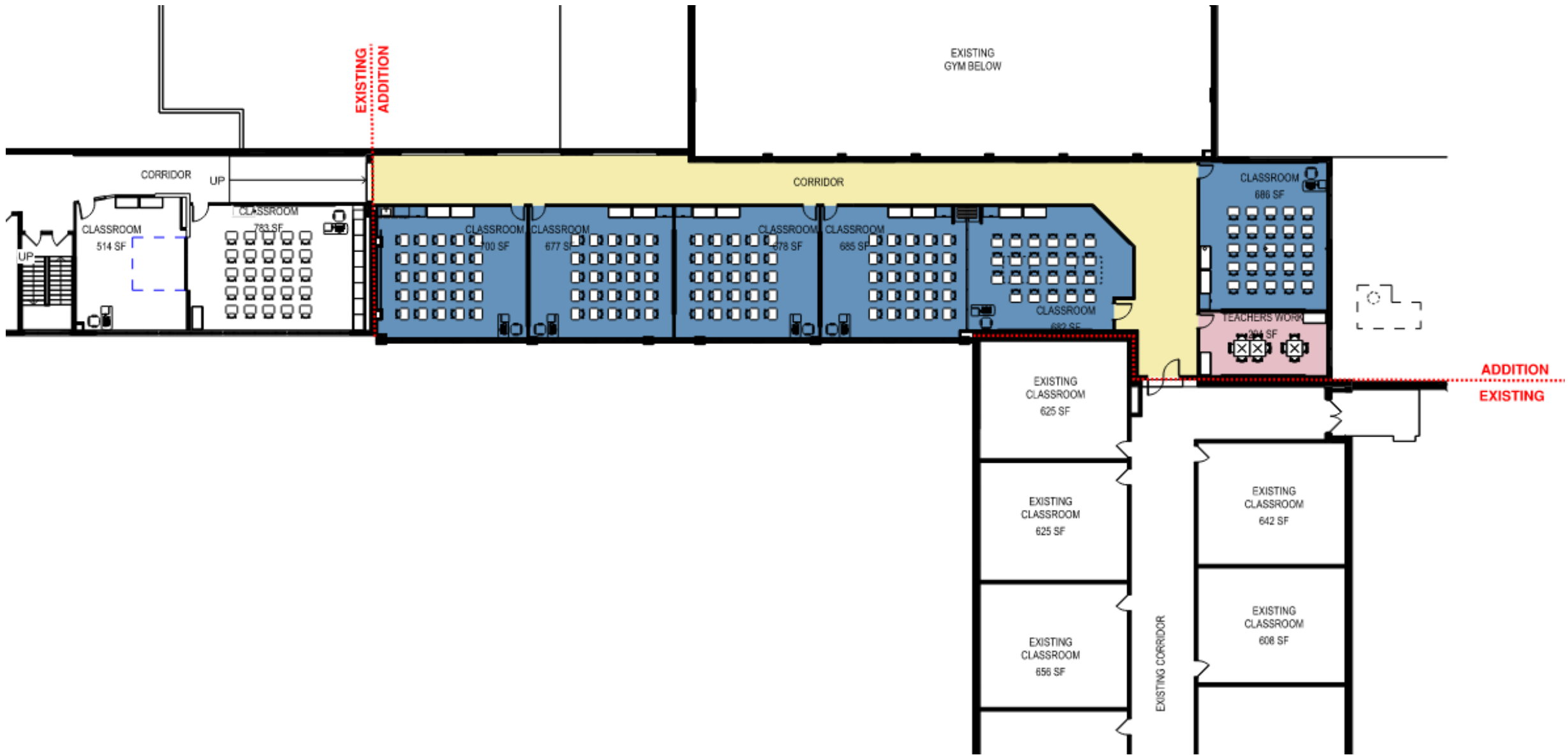
Project Overview

- AHS 2nd Floor Connector project identified as a high priority during the AHS/WAHS Master Plan completed in 2023.
- High School Renovation Funding
- Project Budget = \$4.5M

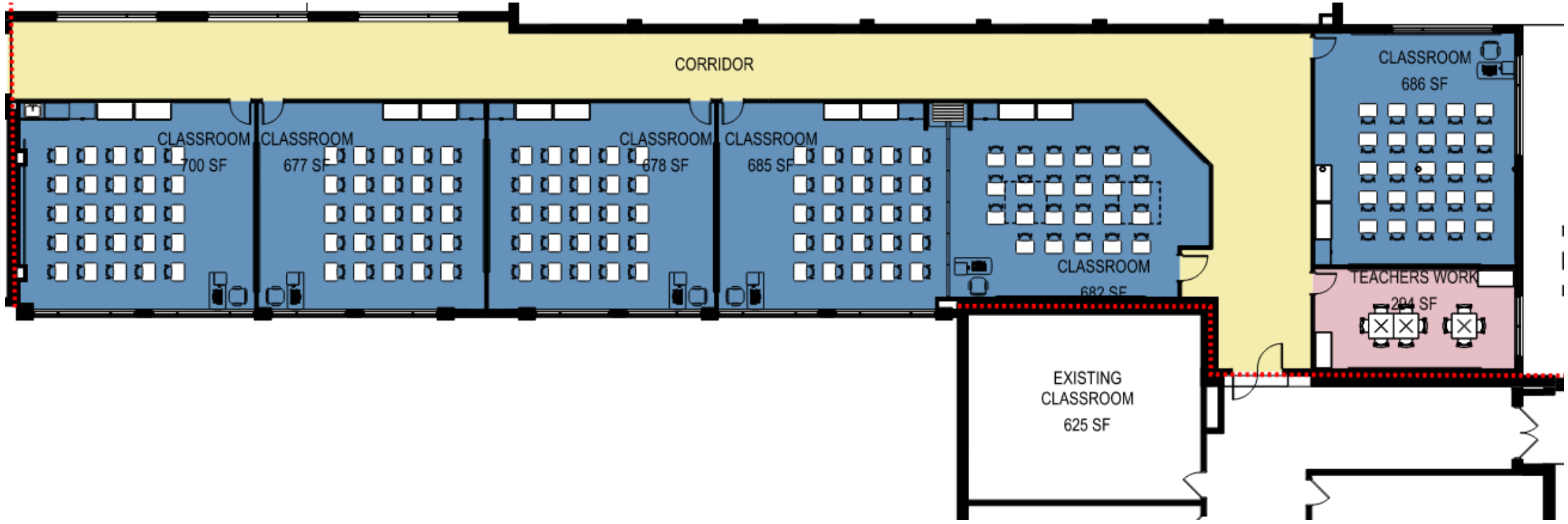


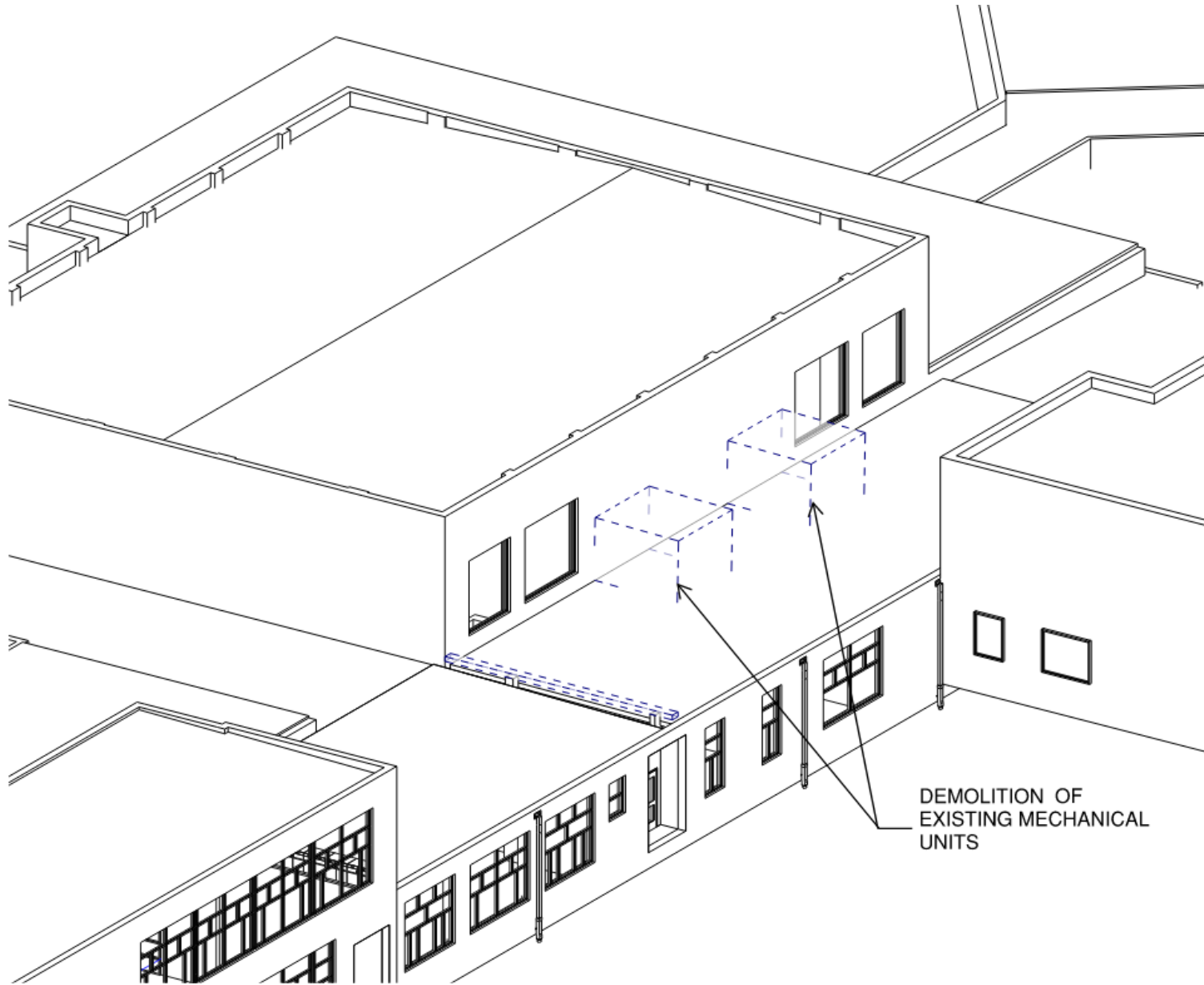
CR

PROPOSED ADDITION - AERIAL

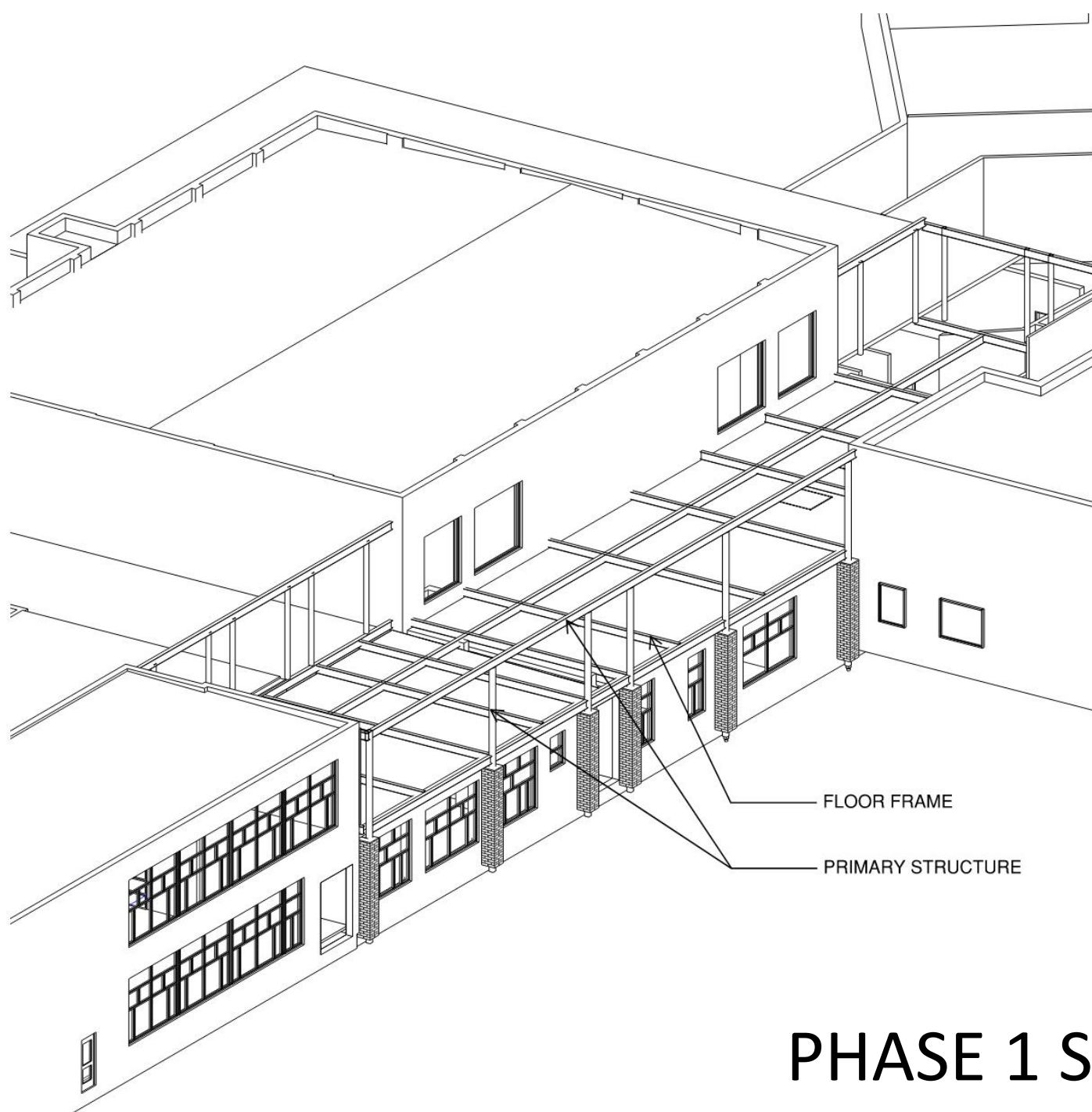


OVERALL FLOORPLAN





DEMOLITION OF
EXISTING MECHANICAL
UNITS

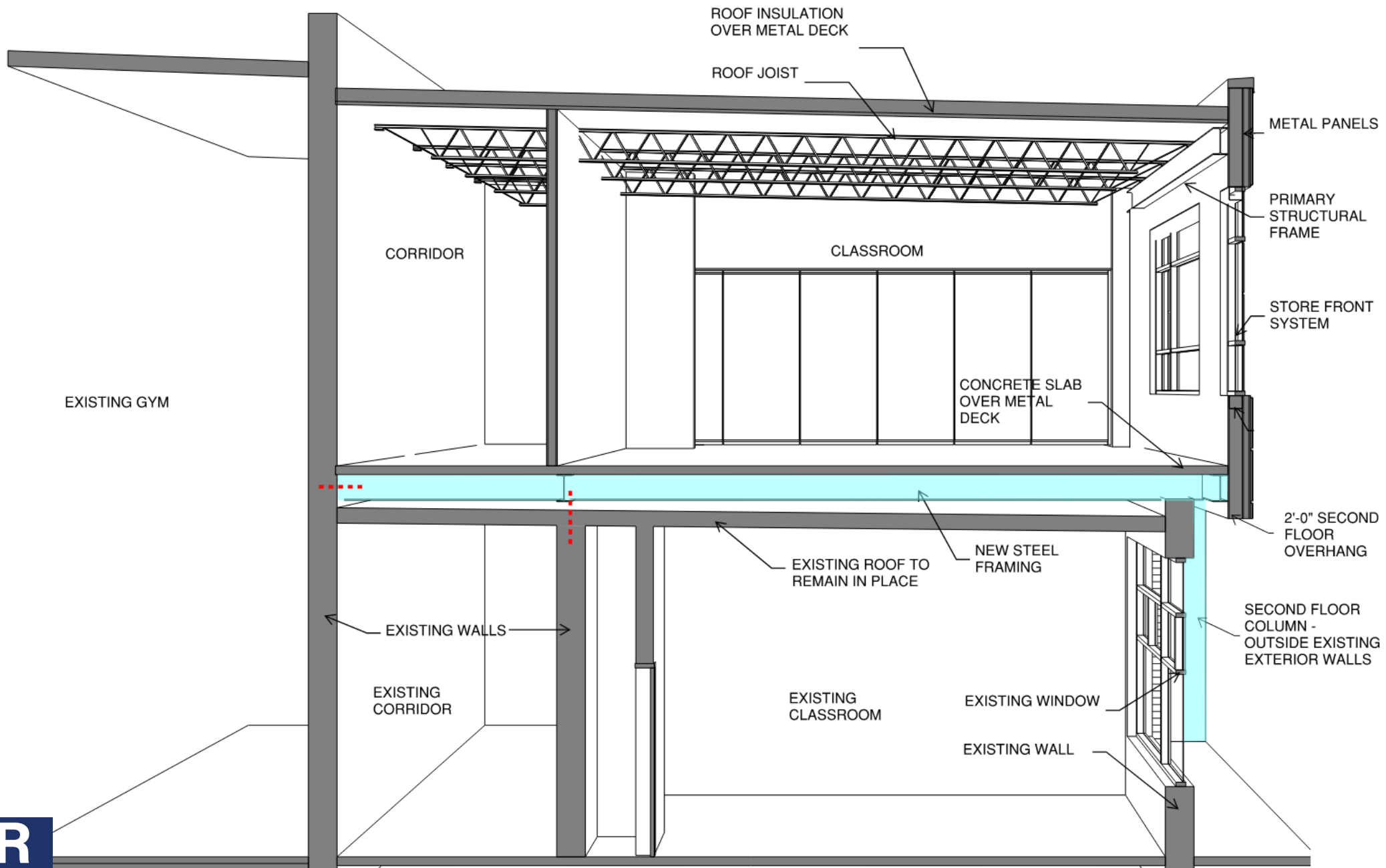


FLOOR FRAME

PRIMARY STRUCTURE

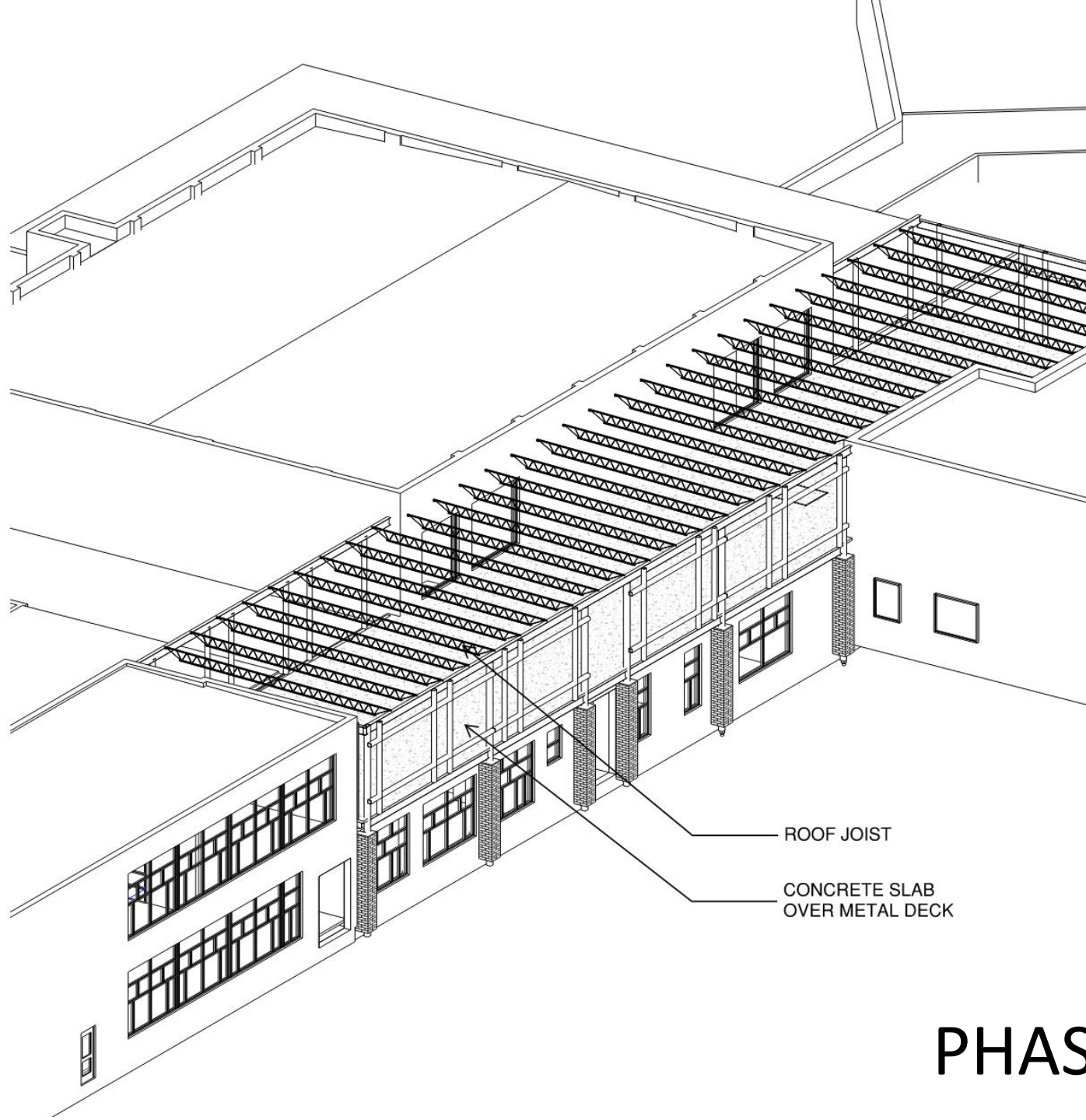
CR

PHASE 1 SUMMER 2024



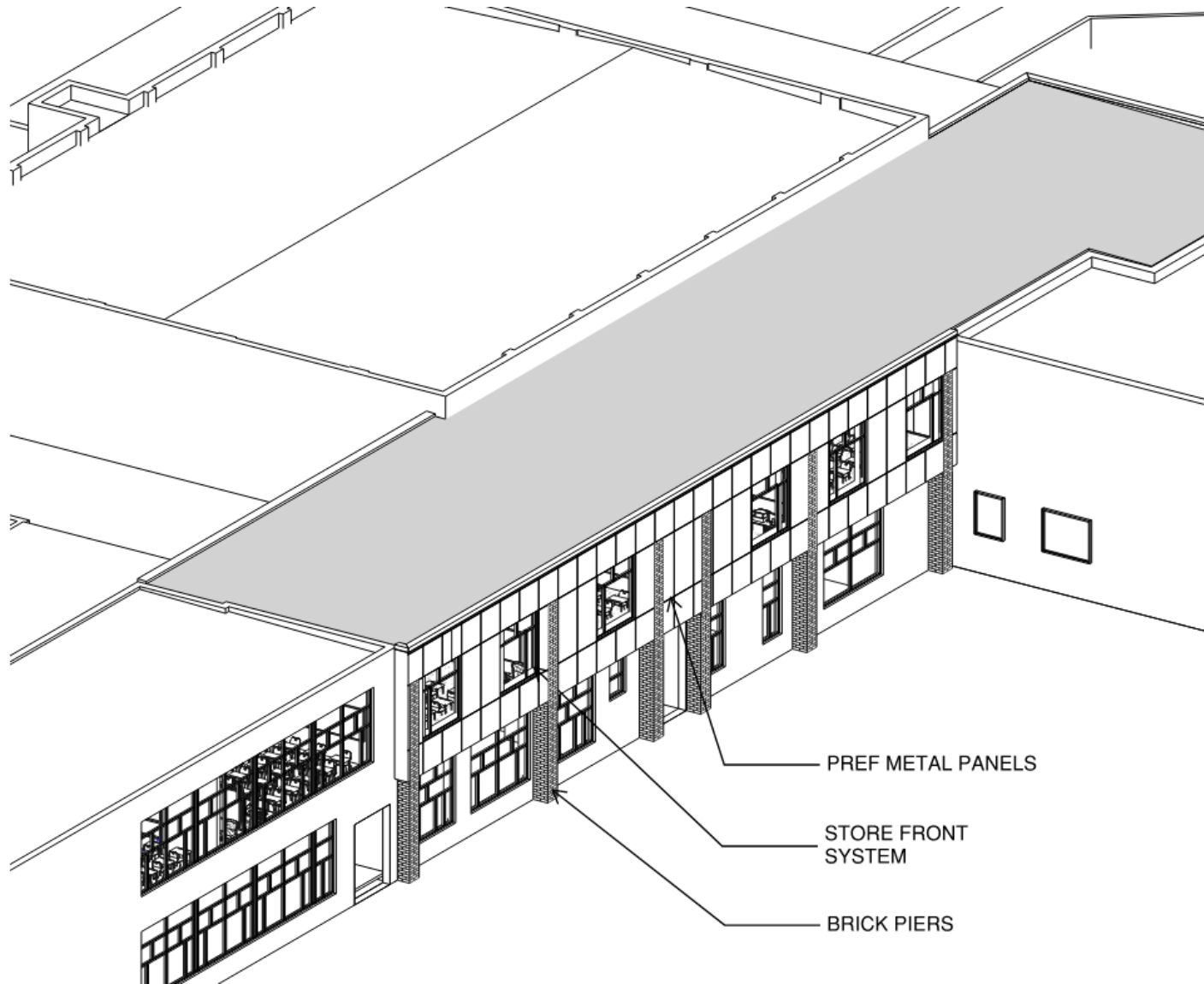
CR

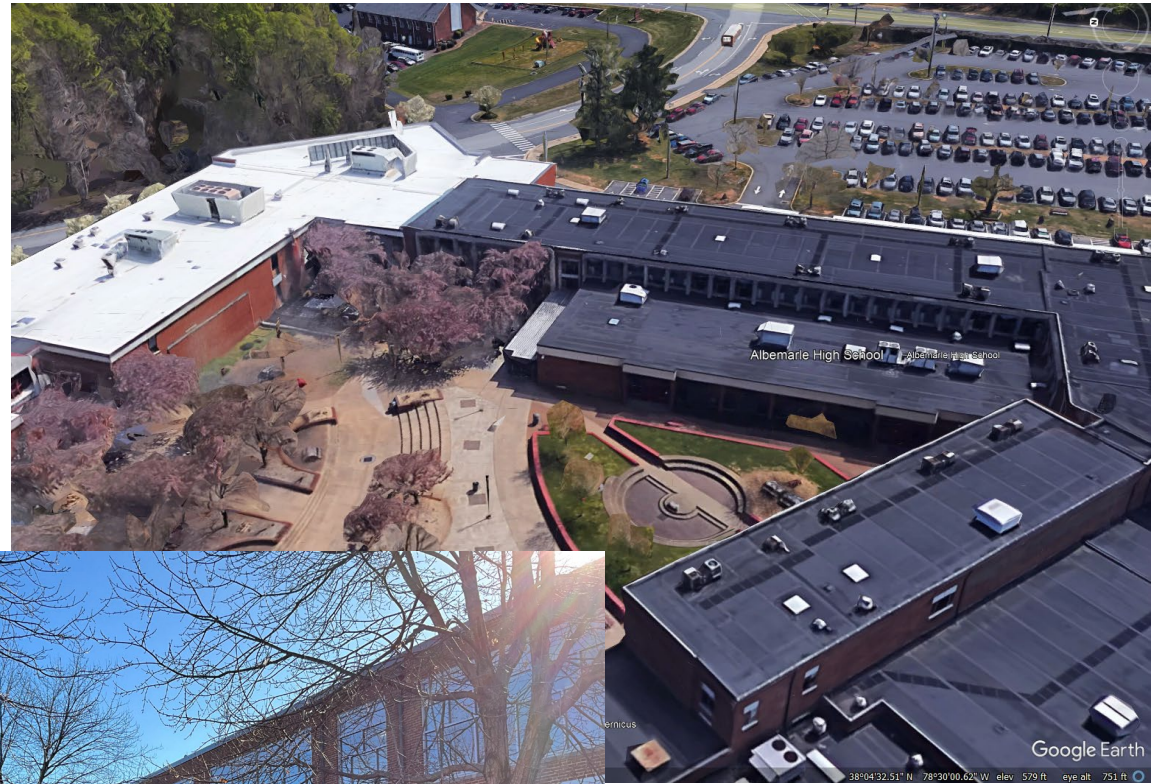
SECTION



ROOF JOIST

CONCRETE SLAB
OVER METAL DECK





CR

EXISTING COURTYARD



CR

COURTYARD EXTERIOR ELEVATION



CR

COURTYARD EXTERIOR ELEVATION

ALBEMARLE HIGH SCHOOL SECOND FLOOR CONNECTOR ADDITION

Addition	6,656sf
Selective Renovations	605sf

PROJECT COSTS

CIP Construction Budget	\$4,500,000
SD Construction Cost Estimate	\$4,152,632 (\$606.22/sf)



ALBEMARLE COUNTY HIGH SCHOOL

2ND FLOOR CONNECTOR ADDITION

	2023	2024												2025		
Task	Dec	Jan	Feb	Mar	Apr	May	Jun	Jul	Aug	Sep	Oct	Nov	Dec	Jan	Feb	Mar
Schematic Design	█	█														
Design Development		█	█													
Construction Documents			█	█												
Bidding / Contracts					█	█										
Construction							█	█	█	█	█	█	█	█	█	█
Final Completion / Occupancy																█



QUESTIONS?