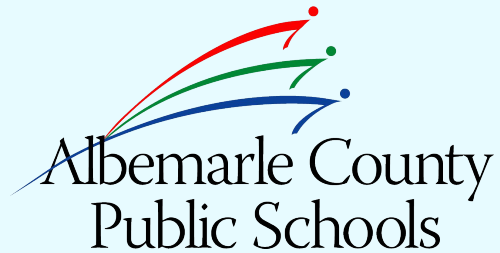




FY 25 Budget Development

Budget Updates



Strategic Plan: Learning for All

VISION

Our learners are engaged in authentic, challenging, and relevant learning experiences, becoming lifelong contributors and leaders in our dynamic and diverse society.

MISSION

Working together as a team, we will end the predictive value of race, class, gender, and special capacities for our children's success through high-quality teaching and learning for all. We seek to build relationships with families and communities to ensure that every student succeeds.

We will know every student.

VALUES

Equity
Excellence
Family and Community
Wellness

GOALS



Thriving Students



Affirming and Empowering Communities



Equitable, Transformative Resources

Budget Advisory Committee



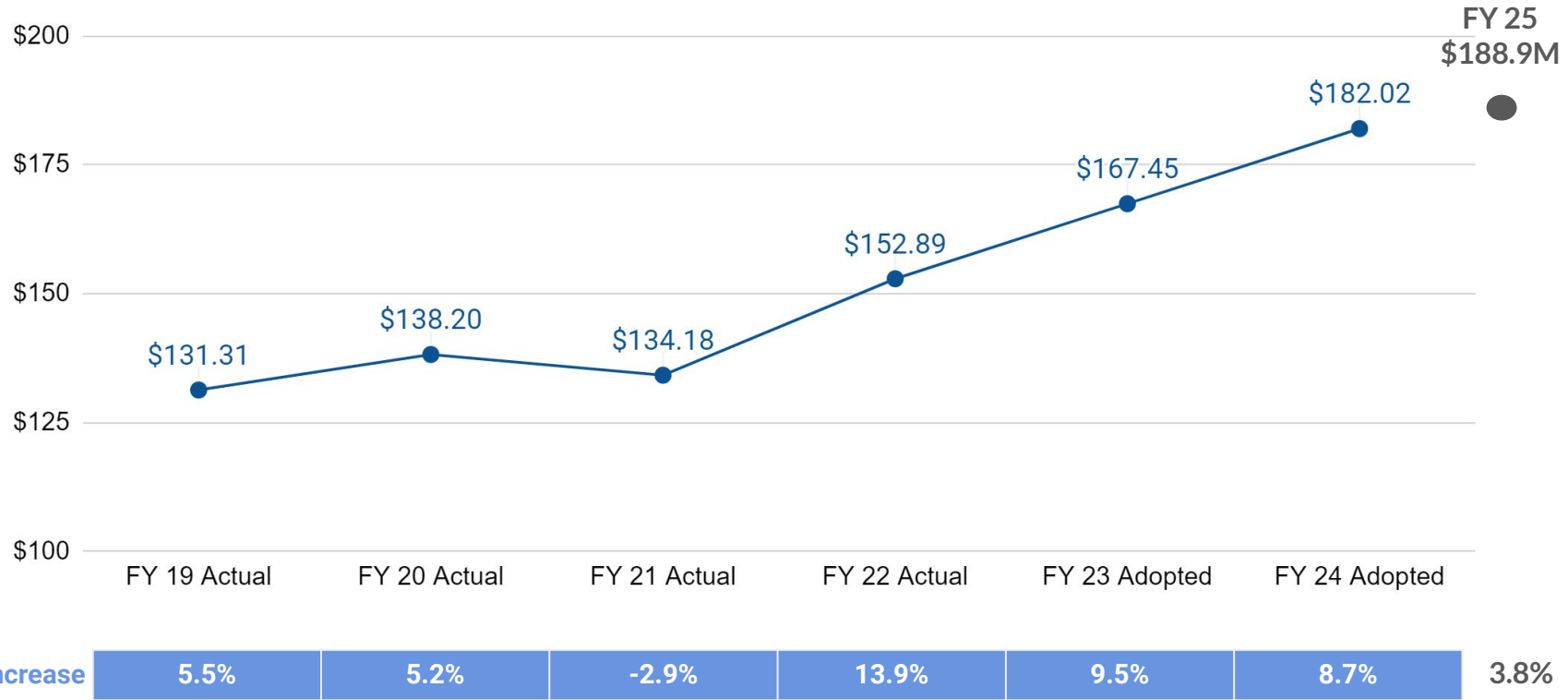
Members

Pictured:

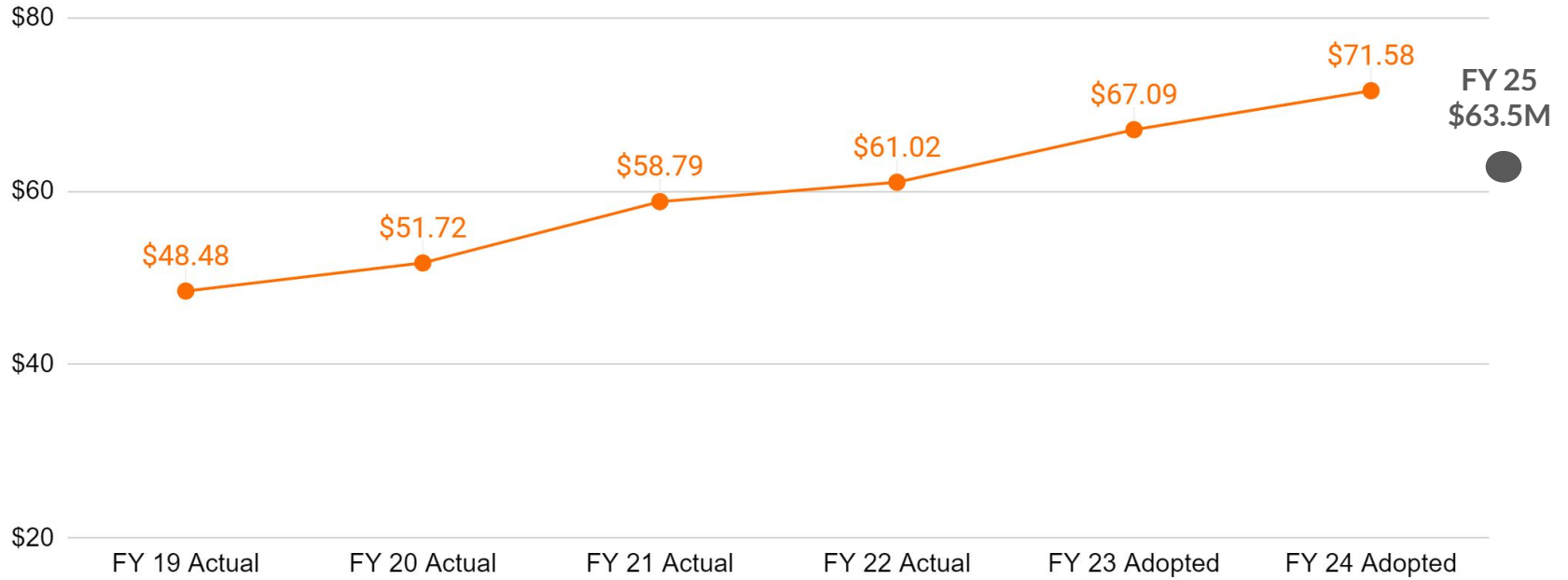
Julian Bivins
Scott Jefferies
G. Paul Matherne
Dennis Rooker
Alan Swinger
June West

Jason Handy
Mary-Huffard Kegley
Charles Lewis
Jerrod Smith
Sarah Strassheim

Local Government Transfer Forecast



State Revenue Forecast & LCI Impact



Annual Increase

-1.8%

6.7%

13.7%

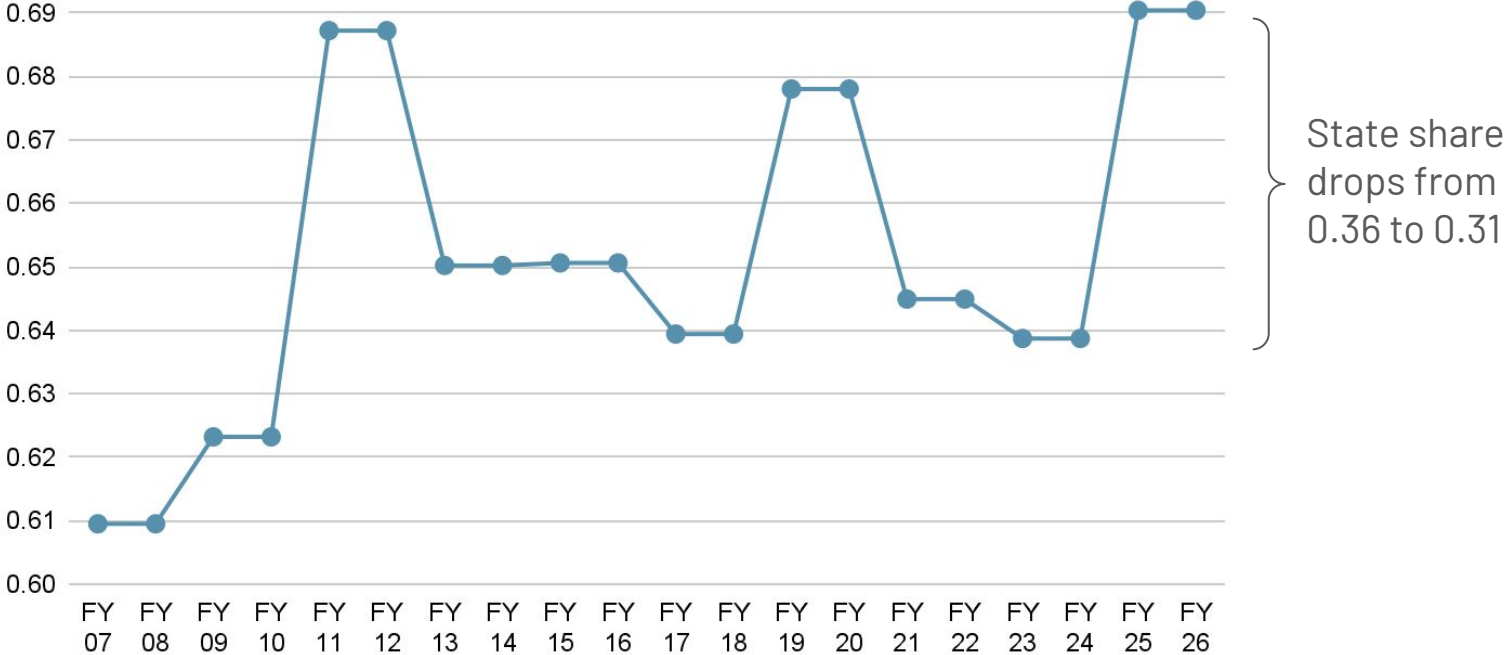
3.8%

9.9%

6.7%

-11%

Local Composite Index for ACPS



State Budget Detail

	FY 24 Adopted	FY 24 Projected	FY 25 Draft	Change from Adopted
Average Daily Membership (ADM)	13,591	13,328	13,493	-98
Local Composite Index (LCI)	0.6387	0.6387	0.6904	+0.0517
SOQ + Sales Tax +Rebenchmarking	\$63.41M	\$62.49M	\$59.03M	-\$4.38M
Lottery	\$4.09M	\$3.72M	\$3.29M	-\$0.80M
Grocery Tax Hold Harmless	\$3.06M	\$3.16M	\$0.0M	-\$3.06M
VPI - Bright Stars	\$0.89M	\$0.74M	\$0.69M	-\$0.20M

Expenditure Drivers

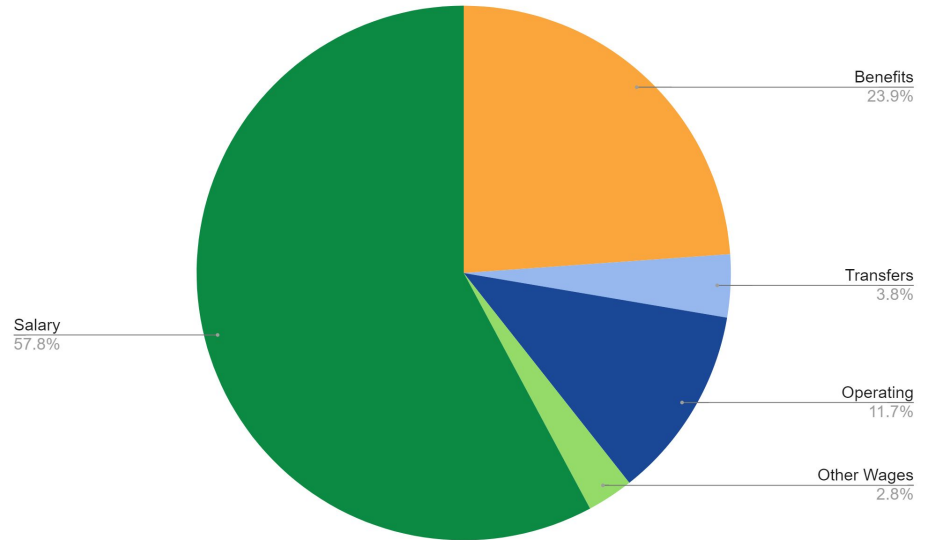
FY 24

- Mid-year Salary Increase of 2%
- Calendar Year 2024 Health Rate Increases

FY 25

- Inflation & Non-discretionary Increases
- Calendar Year 2025 Health Rate Increases
- Continuation of programs
- Bellwether Audit Recommendations
- July 1, 2024 Compensation Increase

FY 24 Budget by Expense Type



Questions/Discussion