

NOTES:

1. THIS PLAT HAS BEEN PREPARED USING RECORD INFORMATION AS SHOWN HEREON. ANGLES AND DISTANCES SHOWN ARE TAKEN FROM RESPECTIVE DEEDS AND PLAT REFERENCES SHOWN THEREIN. ALL DEED REFERENCES ARE FROM THE CIRCUIT COURT CLERK'S OFFICE OF ALBEMARLE COUNTY.

TMP 91-12A  
N/F CLAUDE S SHELHORSE JR  
OR VIRGINIA SHELHORSE  
(W.B. 176 PG. 131)

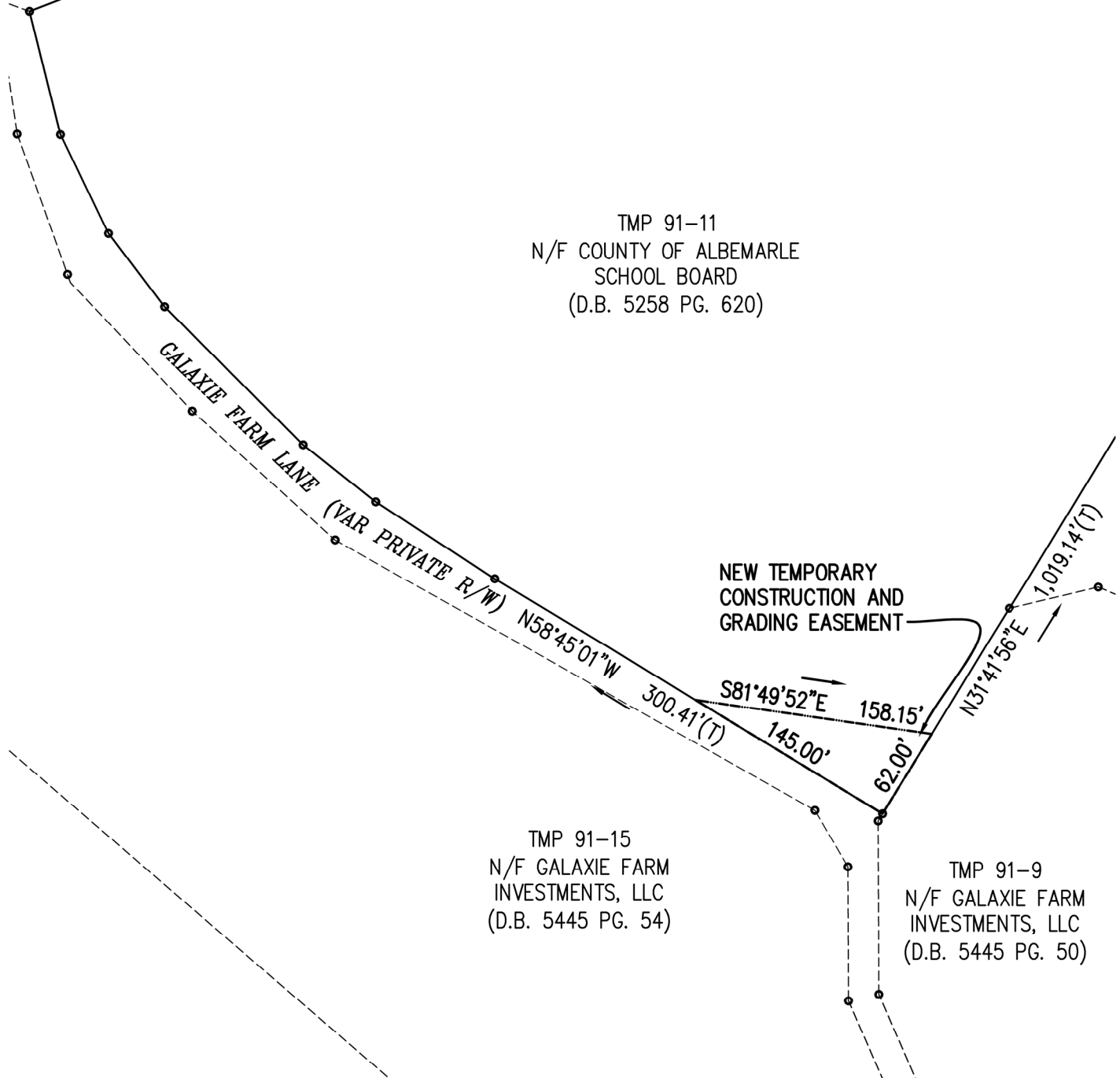
TMP 91-11  
N/F COUNTY OF ALBEMARLE  
SCHOOL BOARD  
(D.B. 5258 PG. 620)

GALAXIE FARM LANE  
(VAR PRIVATE R/W)

NEW TEMPORARY  
CONSTRUCTION AND  
GRADING EASEMENT

TMP 91-15  
N/F GALAXIE FARM  
INVESTMENTS, LLC  
(D.B. 5445 PG. 54)

TMP 91-9  
N/F GALAXIE FARM  
INVESTMENTS, LLC  
(D.B. 5445 PG. 50)



DATE:	02-7-2022
REV:	
REV:	
REV:	
SCALE:	1"=100'
JOB:	21.2532
SHEET:	1 OF 1

PLAT SHOWING  
TEMPORARY CONSTRUCTION AND  
GRADING EASEMENT CROSSING  
TAX MAP 91 PARCEL 11  
  
SCOTTSVILLE MAGISTERIAL DISTRICT,  
ALBEMARLE COUNTY, VIRGINIA

**ROUDABUSH, GALE & ASSOC., INC.**  
A PROFESSIONAL CORPORATION  
SERVING VIRGINIA SINCE 1956

PHYSICAL ADDRESS: 999 SECOND ST. SE. SUITE 201 CHARLOTTESVILLE, VA 22902  
MAILING ADDRESS: 435 MERCHANT WALK SQ. SUITE 300-159 CHARLOTTESVILLE, VA 22902

PHONE 434-977-0205 WWW.ROUDABUSH.COM